

# 97000 Straight Front High Volume Refrigerated Display Cases



## Features & Finishes:

- Tempered Insulated Front Glass
- Insulated Glass Ends
- Framed, Sliding, Insulated Tempered Glass Doors
- Top Light & Shelf Lights with Lamps and Shields
- Heavy Duty Deck - White Finish
- Heavy Duty Steel Base - Black Finish
- White Wire Shelves (40" H-2)(48" H-3)
- Refrigeration Unit - Contained in Base
- Refrigeration Unit - Removable for ease of Maintenance and Cleaning
- 120 Volts - 60 Cycle - Single Phase
- 1/2 HP - 12 Amps
- Automatic Energy Saving Condensate Evaporator
- Cord, Plug & Switch
- U.L. & C.U.L. Listed
- "ETL" Sanitation Listed (Conforms to NSF STD-7)



## Spartan Showcase, Inc.

A division of RHC/Spacemaster Corporation

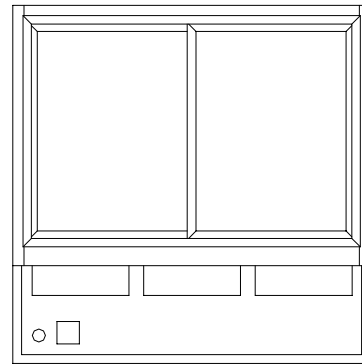
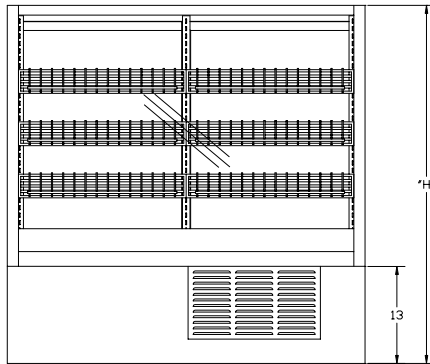
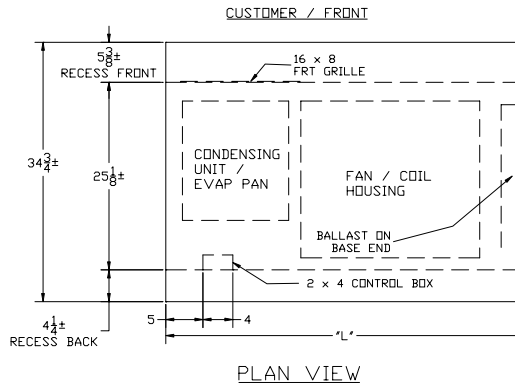
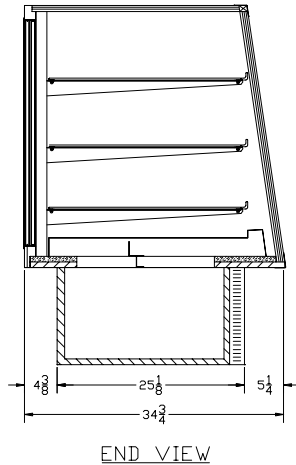
e-mail: [sales@spartanshowcase.com](mailto:sales@spartanshowcase.com)

[www.spartanshowcase.com](http://www.spartanshowcase.com)

P.O. BOX 470  
Union, MO 63084

1.800.325.0775  
Fax 636.583.4067

# 97000 Straight Front High Volume Refrigerated Display Cases



Model No.	Dimensions: L X W X H	Rows of Shelves	Est. Crated Weight	Case Options:
97040-48R	48" X 34 3/4" X 40"	2	690 lbs.	1. Mirror Ends 2. Mirror Doors 3. Décor Front Panel (Standard HPL Finish) 4. HPL Finish Cover Front and Ends (Standard HPL) 5. Brasstone (Frame & Lights only) 6. Self Closing Doors 7. Transparent Mirror Doors 8. 4 Yr Extended Motor/Compressor Parts Warranty
97040-59R	59" X 34 3/4" X 40"	2	710 lbs.	
97040-77R	77" X 34 3/4" X 40"	2	880 lbs.	
97048-48R	48" X 34 3/4" X 48"	3	700 lbs.	
97048-59R	59" X 34 3/4" X 48"	3	810 lbs.	
97048-77R	77" X 34 3/4" X 48"	3	900 lbs.	



**Spartan Showcase, Inc.**

A division of RHC/Spacemaster Corporation

e-mail: sales@spartanshowcase.com

www.spartanshowcase.com

P.O. BOX 470  
Union, MO 63084

1.800.325.0775  
Fax 636.583.4067

# 97000 Straight Front High Volume Refrigerated Cases

Model No.	Dimensions: L X W X H	Rows of Shelves	Est. Crated Weight
97040-48R	48" X 34 3/4" X 40"	2	690 lbs.
97040-59R	59" X 34 3/4" X 40"	2	710 lbs.
97040-77R	77" X 34 3/4" X 40"	2	880 lbs.
97048-48R	48" X 34 3/4" X 48"	3	700 lbs.
97048-59R	59" X 34 3/4" X 48"	3	810 lbs.
97048-77R	77" X 34 3/4" X 48"	3	900 lbs.

Code No.	Case Options:
8920	1. Mirror Ends
8550	2. Mirror Doors
9190	3. Décor Front Panel (Standard HPL Finish)
8850	4. HPL Finish Cover Front and Ends (Standard HPL)
8521	5. Brasstone (Frame & Lights only)
8610	6. Self Closing Doors
	48" L
	59" L
	77" L
8555	7. Transparent Mirror Doors
A65-30-004	8. 4 Yr Extended Motor/Compressor Parts Warranty

Specifications Subject to change without notice



## Spartan Showcase, Inc.

A division of RHC/Spacemaster Corporation

e-mail: [sales@spartanshowcase.com](mailto:sales@spartanshowcase.com)

[www.spartanshowcase.com](http://www.spartanshowcase.com)

P.O. BOX 470  
Union, MO 63084

1.800.325.0775  
Fax 636.583.4067