



Model BAP-2-RI  
Proof Box

Item No. \_\_\_\_\_

## AUTOMATIC PROOF BOX Two Rack

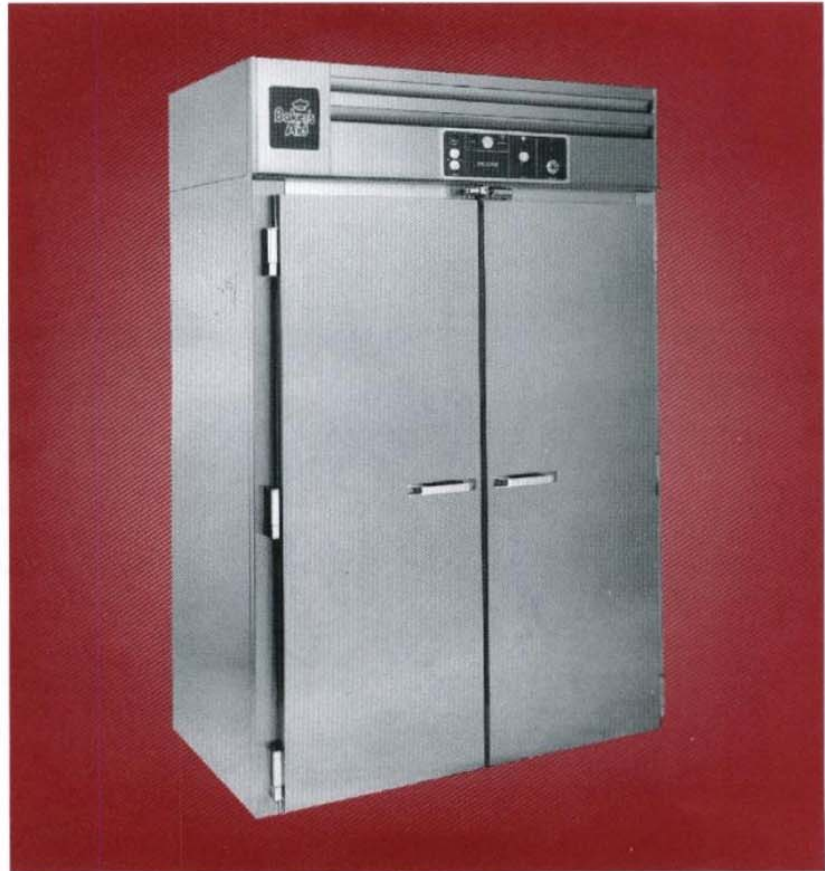
### Construction

- Manufactured in the U.S.A.
- Series 300 stainless steel interior lining, outer walls and doors with no exposed fasteners
- 3 inch thick insulation, 100% frothed-in-place polyurethane foam
- Door gaskets are self-adjusting, magnetically actuated for positive sealing action
- Chromium plated hinges, safety stop to prevent over swing
- Convenient, self-closing doors on silent Delrin cams allow full width access and remain stationary when opened 95 degrees
- Door assembly is completely insulated

### Features

- Maintenance Free Bakemark-O-Matic electronic water level control
- Fully automatic Flush-Klean and pressure rinse system
- Exclusive Humid-O-Matic sensor control for precise humidity
- Electrical circuitry incorporates solid state controls
- Trouble warning probe that automatically shuts off the proof box in the event of difficulty
- Robertshaw heating controls, including a dial thermometer, measure and regulate temperature to exact requirements
- Oversized motor and blower fan permits greater, faster and more uniform distribution of air throughout the cabinet interior
- Totally self-contained, fully automatic air treatment package mounted on top with switches and dials for control, blower, heating and humidity. Indicator lights monitor all functions
- Shipped totally assembled for easy installation

*The latest technology and attention to detail has resulted in the finest proof box on the market today. From its all stainless steel construction, to its Patented Flush-Klean System with Bakemark-O-Matic water flow probes, the Baker's Aid proof box is designed for maximum yield and minimum maintenance making it the preferred proof box by chefs and bakers everywhere.*



See reverse side for detailed specifications ▶

## BAKER'S AID

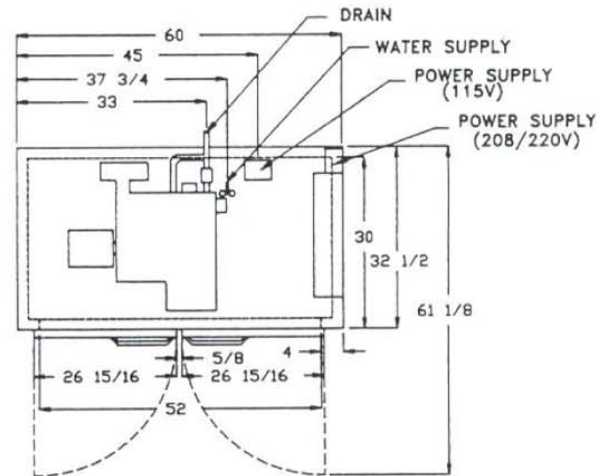
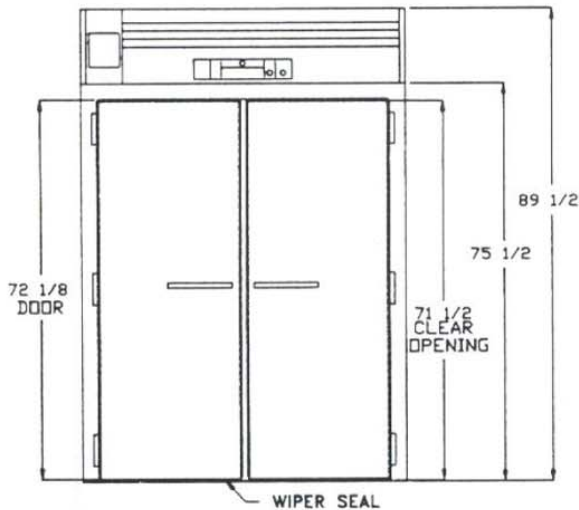
SERVING OUR CUSTOMERS SINCE 1895



# FULLY AUTOMATIC PROOF BOX

Model BAP-2-RI

Two Rack



## Utility Requirements

Control Circuit and Blower Motor 110/60/1 - 1100W - 10.0 AMPS  
Humidifier and Heat Elements 208/60/1 - 6073W - 29.2 AMPS  
or 220/60/1 - 6800W - 30.9 AMPS

## Plumbing

3/8 NPT water line  
3/4 inch drain line

## Additional Standard Sizes Available

Single through eight rack capacity

## Installation

Unit must be installed on level floor.  
All connections per above drawing.  
Shipped totally assembled for easy installation.

## Capacity

Two standard 18" x 26" pan racks or two standard 23" x 23" donut screen rack

## Shipping Weight

760 Lbs.



Note: Due to our policy of continuous product improvement, specifications are subject to change without notice.

# BAKER'S AID