

PRAXAIR, INC
SPIRAL SPECIFICATION SHEET

SERIAL NO: 96008

By: J. Kalista	Date: 12/1/94
Revision: 3	
By: J. Kalista	Date: 3/23/98

MACHINE TYPE:	STD. LN2 L.H. UP W/CCF & BELT WASH HEADER
PRAXAIR MODEL# :	JE U6 38S/347/4.3 STD L.H. UP W/BELT WASH HEADER
CUSTOMER:	CGI DESSERTS, INC (MOUSSE CAKE LINE)

DESIGN OPTIONS

AIRFLOW:	Cage Fan: <input checked="" type="checkbox"/>	H.P.	20	R.P.M.	1160
MOTOR:	Mf. BALDOR	Mf. Part #	CP4102T-MIS		
		Praxair Part #	SF1109563A		

SPIRAL DATA

BELT:	Width: 38 in	Praxair Part #	SF1109023A
	Type: OMNI-FLEX SMALL RADIUS G-3 1/2 X 1 1/2 X 1 1/2 CL @ 20		
	Per tier: 23.8 ft	Weight: 10 lb/ft	
	Active Length: 352 ft	Total Length: 393 ft	
TIER:	Pitch: 6.6 in.	Number of	14
CAGE:	<input checked="" type="checkbox"/> Up <input type="checkbox"/> Down		
PRODUCT:	Max. Height 4.3 in.	Max Load 6.06 lb/linear ft.	
SPIRAL CONFIGURATION: LEFT HAND - UP STRAIGHT THRU			
SPEED:	Max. 16.7 fpm @ 80 Hz	Min. 4.2 fpm @ 20 Hz	
DWELL:	Min 21 min.@ 80 Hz	Max 84 min.@ 20 Hz	
SLIP:	Calculated 51.2 in.	Measured	in.

CRYOGEN INJECTION SYSTEM

LN2 <input checked="" type="checkbox"/>	No of Headers: 16	Nozzles/Header: 8	Nozzle Praxair Part #	NF1016324A
Header Locations	4 Injecting on tiers 3,6,9 & 12 (See Remarks)		Normal Operating Press:	7PSI
CO2 <input type="checkbox"/>	No of Headers:	Prasos/Header:	Praso Setting:	
Header Locations	Praso Praxair Part #		Normal Operating Press:	PSI
	Praso Praxair Part #		Nozzle Praxair Part #	

CRYOGEN CONTROL VALVE

<input type="checkbox"/>	Size:	Trim:	Praxair Part #
<input checked="" type="checkbox"/>	Ball Type: 30 Deg.	Cv Reqd.:	Praxair Part # SF1113114A

PRAXAIR, INC
SPIRAL SPECIFICATION SHEET

SERIAL NO: **96008**

PHYSICAL SPIRAL DIMENSIONS

CAGE DIAMETER:	51 in.	OVERALL BELT DIA.	127 in.
OVERALL SPIRAL HEIGHT:	162 1/8 in.		
ENCLOSURE:	Width 151 in. w/doors	Length 192 in.	Height 137 in.
ENT. ELEVATION:	Freezer Floor	5 5/16 in.	Plant Floor 30 5/16 in.
EXIT ELEVATION:	Freezer Floor	101 in.	Plant Floor 126 in.

SPIRAL CONTROLS

VOLTAGE:	Plant 460	Machine 460	GFD 6A
TOTAL AMPS:	48	Vortec 1	Probe Style Dual

CONVEYOR DRIVE

VARIABLE FREQUENCY	AC Size 7.5	H.P.	Input Voltage 460
	Drive Type	Model#	

MAIN DRIVE

MOTOR:	Mf.	BALDOR	H.P.	3	R.P.M.	1140
	Praxair Part #	SF1107193A	Mf. Part #		VM3704	
REDUCER:	Mf.	EURODRIVE	Ratio		355:1	
	Praxair Part #	SF1114723A	Mf. Part #		RF103R72LP215TC	
SPROCKETS:	Drive	140B15 X 2 7/8 BORE	Praxair Part #		7038007	
	Cage	140B80 X 4" BORE	Praxair Part #		SF1009603A	
CHAIN:	Type	#140 ROLLER	Length	25 ft.	Praxair Part #	SF1009603A
	Master Link	Praxair Part #	SF1009593A	Offset Link	Praxair Part #	SF1010593A

AUXILIARY DRIVE

MOTOR:	Mf.	BALDOR	H.P.	.75	R.P.M.	1140
	Praxair Part #	SF1107183A	Mf. Part #		VM3543	
REDUCER:	Mf.	WNSMITH	Ratio		60:1	
	Praxair Part #	SF1113863A	Mf. Part #		20CDT-60R-56C	
SPROCKETS:	Drive	50B13 X 1.00 BORE	Praxair Part #		7035017	
	Driven	50B32 X 1.25 BORE	Praxair Part #		7035005	
CHAIN:	Type	#50 ROLLER	Length	4 ft.	Praxair Part #	SF1111233A
	Master Link	Praxair Part #	7030011	Offset Link	Praxair Part #	7030019

SERIAL NO: **96008**

PRAXAIR, INC
SPIRAL SPECIFICATION SHEET

MAJOR ASSEMBLIES

FINALS	SN96008	WIRING DIAGRAM:	D-195-1-6
ROILED TRAC	SX5004092D	FANS/CAGEFAN:	SX5015552D
WAKE-UP:	SX5014532D	CRYOGEN PANEL:	NX5025372D
ENTRANCE:	SX5012542D	INFEED:	N/A
EXITE	SX5013522D	WASH TANK:	SEE BELT WASH HRD
EXIT DRIVE:	SX5020452D	EDGE DRIVE:	N/A
ENGLOSURE:	SX5008062DMOD	DILUTION BLOWER:	FX1013952D
POST AND SENSOR:	SX5004052D	BELT WASH HDR	SX5043852D

MANUFACTURING DATA

WEARSTRIP:	Inside	217	ft.	Praxair Part #	SF0502113A
	Middle	328	ft.	Praxair Part #	SF0502113A
	Outside	442	ft.	Praxair Part #	SF0502113A\
HOLD DOWN WEARSTRIP:	Inside	N/A	ft.	Praxair Part #	N/A
	Outside	N/A	ft.	Praxair Part #	N/A
CAGE BAR CAPS:	Qty	39	ea.	Praxair Part #	5052042B

REMARKS

Worcester control valve set degree of travel at 90% max
 60 Amp Disconnect - SF111053A
 60 Amp Fuses - SF111053A

1 Two banks of headers will need to be turned off.

REVISIONS

Rev. 2. Updated to CGI Specifications
 Dwell change involving all drive compents
 Addition of belt wash header

Rev. 3. Addition of belt wash header Dwg. No. SX5043852D

SPIRAL SPECIFICATIONS

BELT WORK:	38 INCHES
BELT TYPE:	SMALL-RADIUS DOWRLEX S.S. G3
TER FITCH:	65
MAX PRODUCT HEIGHT:	43
NUMBER OF CAGES:	14
ACTIVE BELT LENGTH:	347 FEET
TOTAL BELT LENGTH:	388 FEET
DRILL TIMES:	85 TO 90 MIN
DRIVE TYPE:	75 HP VARIABLE SPEED AC
CAGE/FAN DRIVE:	80 HP AC BELT-DRIVEN
VARIABLE SPEED	48V/48Hz/3PH
VOLTAGE:	19,200 Vol.
UNIT V.T.:	16 EA. - 8 NOZZLE HEADERS
HEADER CONFIGURATION:	4 HEADERS PER TIER ON TIERS 3, 6, 9 & 12 ONE BANK OF 4 WITH VALVE, THREE BANKS OF 4 WITH VALVES, TWO BANKS OF 4 WITH VALVES, TWO BANKS OF 4 NOT RECEIVED FROM THE FREEZER, IF PRODUCT IS BEING HANDLED BY THE LINE SPRAY ACTION, OPEN ONE BANK AT A TIME TO REDUCE HANDLED PRESSURE.
TOTAL NOZZLES:	64 CAGES TOTAL - SEE HEADER CONFIGURATION
FLOW RATE PER NOZZLE:	25 LB HR
NOZZLE TYPE:	LINE SIZE 2.46 DIA DORTICE
CONTROL VALVE:	1" VORSTEC - 30"
PRODUCT:	MUSSE CAGE ON PLASTIC TRAY WITH PAPER COLLAR
PRODUCT WT.:	3 POUNDS
EST. PRODUCTION:	800 LBS/HR MAX INSTANTANEOUS RATES EXCEEDING THIS WILL RESULT IN VARIER PRODUCT
PRODUCT SIZE:	3" DIAMETER x 3 1/2" HIGH
BELT LOADING:	3 ACCESS BELT CAGE LVS. FT)
TEMP. IN:	37°
TEMP. OUT:	57°
HEAT REMOVED:	57 BTU/LB
H/T CURVE:	63.493
H/D CURVE:	NONE SPECIFIED

INSTALLATION APPROVAL

PLEASE REVIEW THE DETAILS OF THIS INSTALLATION DRAWING. A REPRODUCED COPY OF THE DRAWING MUST BE RECEIVED BY THE DEBO PROCESSING DEPARTMENT BEFORE THE UNIT CAN BE RELOADED FOR SERVICE.

IF THERE ARE ANY QUESTIONS CONCERNING THE DESIGN, PLEASE CONTACT MANUFACTURER INC. UNIT NUMBER AT 1-204-344-4423.

IF THE DESIGN IS ACCEPTABLE, PLEASE SIGN THE CORRESPONDING COPY TO:

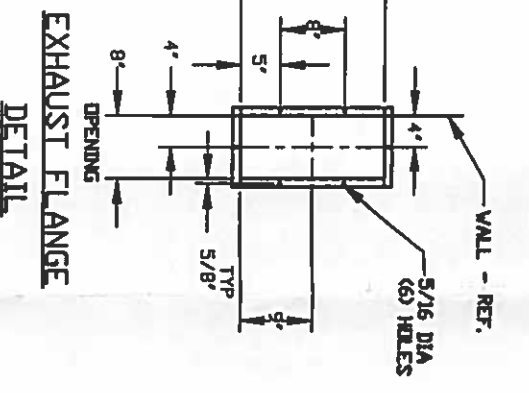
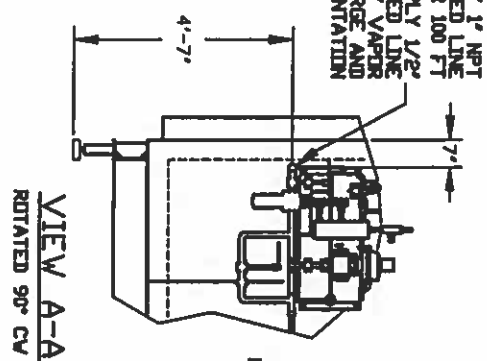
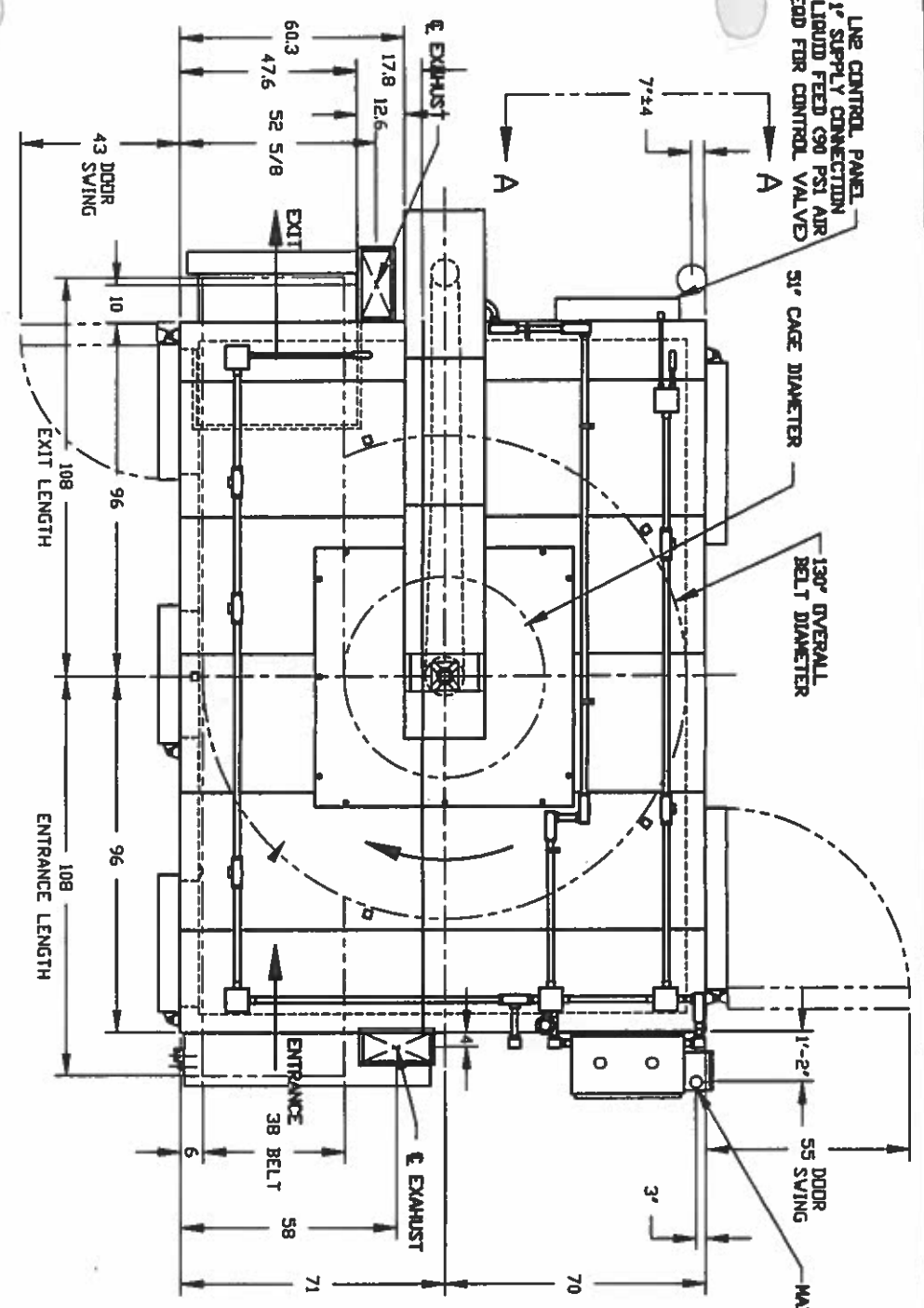
MANUFACTURER INC.
8205 SHILOH DRIVE SUITE 3
VICTORIA, BRIT COLUMBIA
ATTN: UNIT INSPECTOR

THE PRECEDING CONFIGURATION AS SHOWN ON THIS INSTALLATION DRAWING, IS ACCEPTABLE.

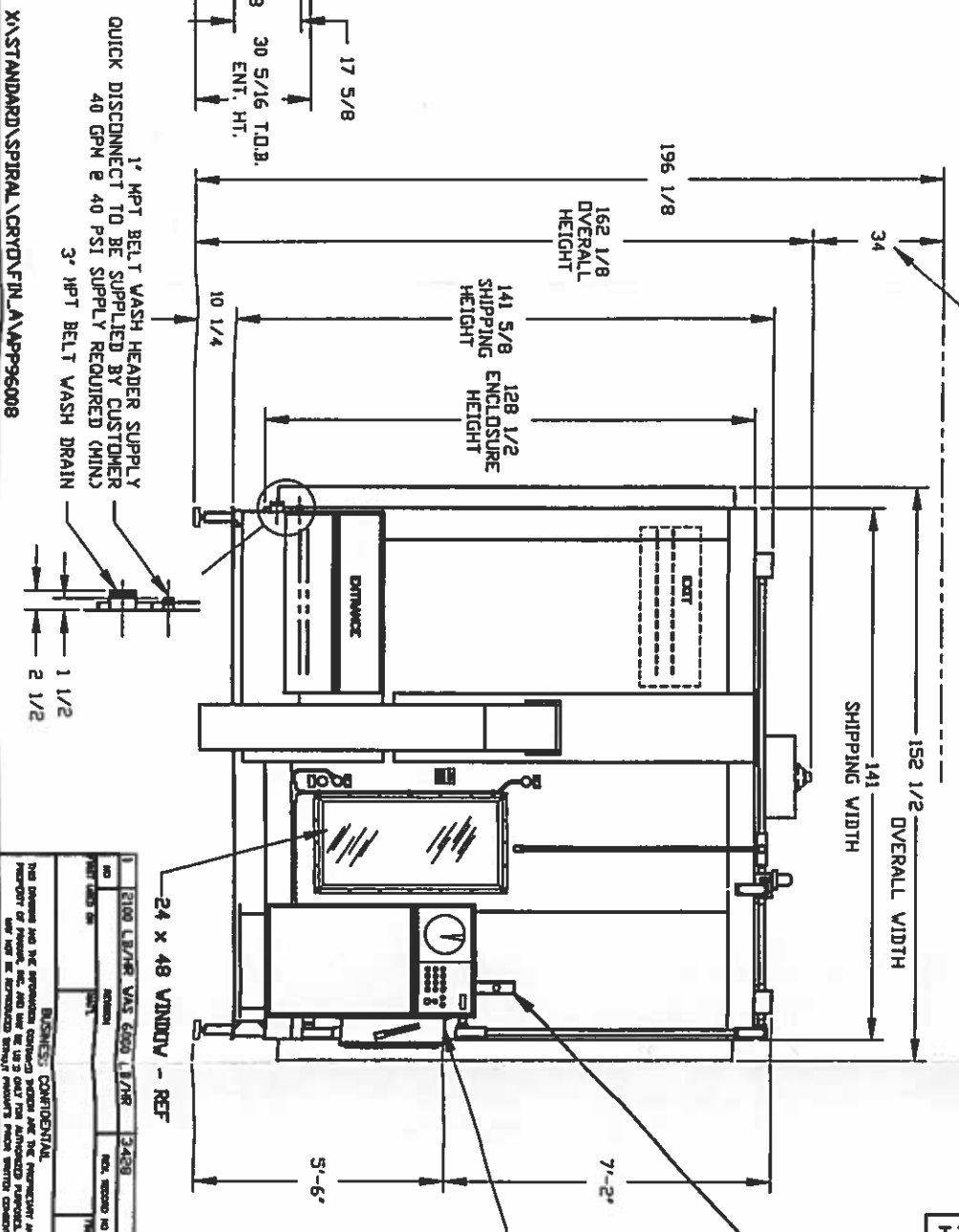
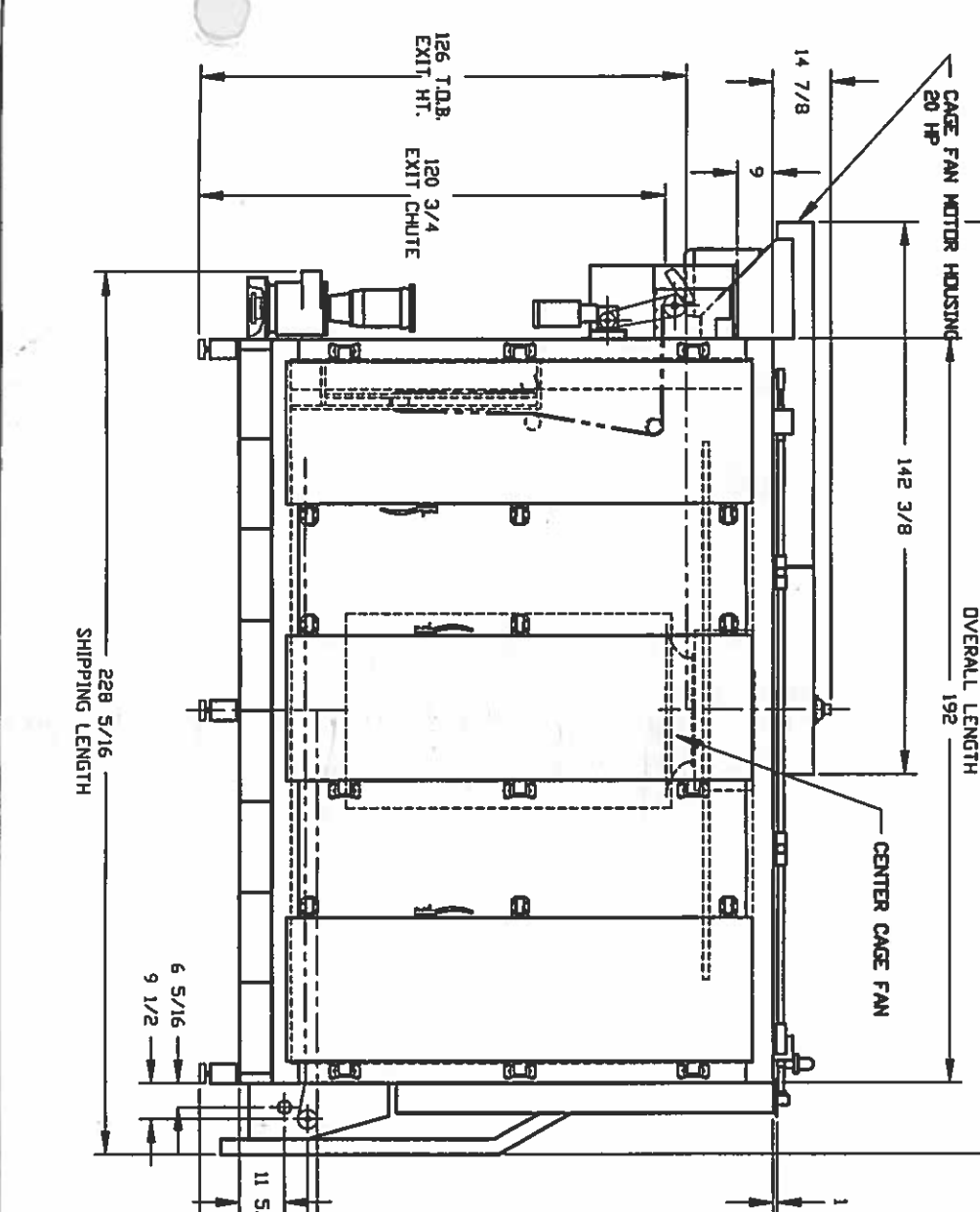
DATE: _____

DESIGNATED: _____

TITLED: _____



CLEARANCE REQD FOR CAGE FAN REMOVAL AND MAINTENANCE



CGI DESSERTS INC.
SN 96008 (MUSSE CAKE LINE)

PRM FREEZER ENGINEERING

STD. LINE SPIRAL VECTOR L.H. V/CAGE FAN
E-UB-38S/347/4, 3

MAIN POWER DISCONNECT
480 VAC 60 Hz 3 ph
INPUT POWER
60 AMP DISCONNECT
48 FULL LOAD APPS

VORSTEC CONTROL PANEL COOLERS (2)
80-100 PSI, 30 SCHFM PER VORSTEC
AIR SUPPLY REQUIRED-AIR AND
WATER FILTERS REQD BY CUSTOMER

NO.	REV.	DATE	BY	DESCRIPTION
1	1	12/18/95	APP	ISSUED FOR FABRICATION

APP 96008 6D 1