

SUB-123P Oven/Proofer



SIZE:

SUB-123P - 77-3/4" High, 36-1/8" Wide, 28-5/8" Deep
1975 mm High, 918 mm Wide, 727 mm Deep

STANDARD FEATURES:

- Silicone rubber gasket
- Magnetic handles
- Full view tempered glass doors
- **AUTOMIST®** Proofer
- Drip trough
- Dual-Pane oven door
- Water filter for **AUTOMIST®**

CONSTRUCTION:

- Welded stainless steel
- Fully insulated
- Control panel accessible through front of unit
- Heating elements accessible inside of cabinet and through top

CONTROLS:

- Programmable controls
- Actual Relative Humidity control

NU-VU® SUB-123P Oven/Proofer



LABORATORY CERTIFICATION AND APPROVAL



In-house service department for next day parts shipments

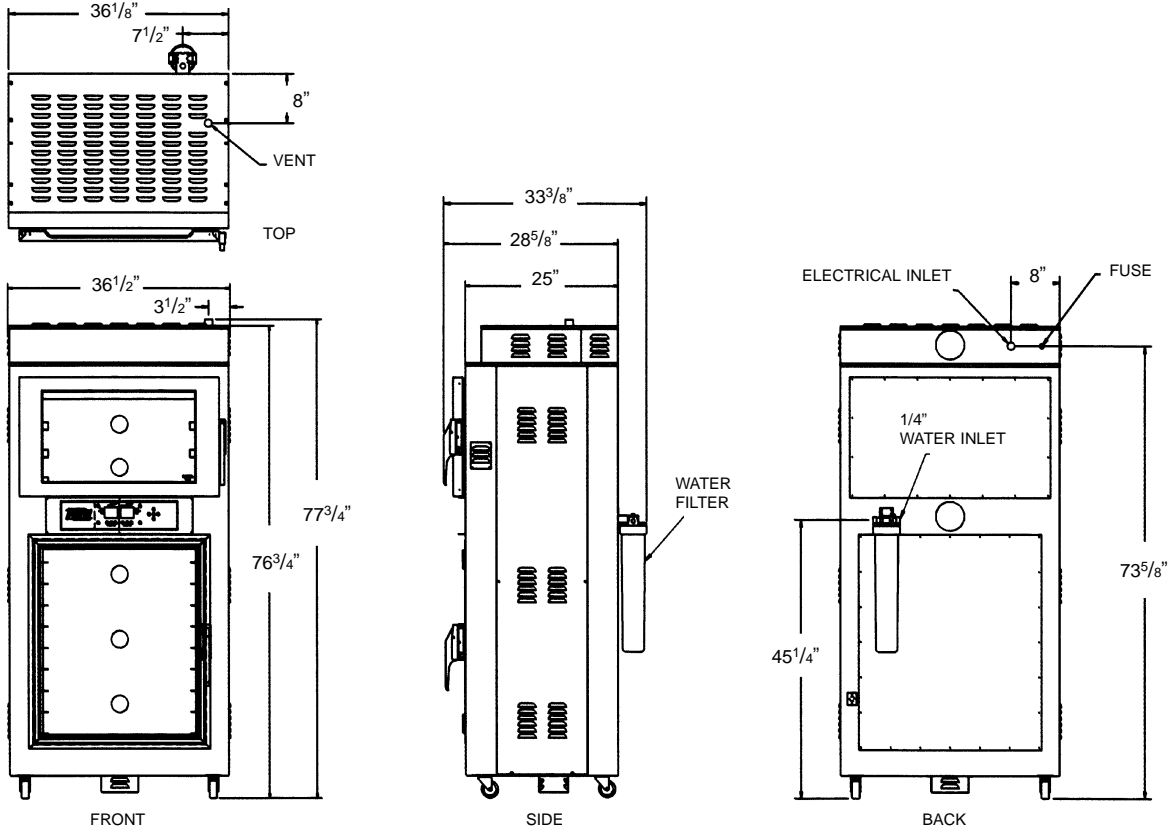


NU-VU® Food Service Systems

www.nu-vu.com
5600 13th Street
Menominee, MI 49858

1-800-338-9886 Toll Free
1-906-863-4401 Phone
1-906-863-5889 Fax

SUB-123P Oven/Proofer



NU-VU® SUB-123P Oven/Proofer

ELECTRICAL:

Amp Draw	208/1	208/3	240/1	240/3
	30	20	27	17

WATTAGE:

OVEN: 4000 • PROOFER: 1200

SERVICE CONNECTIONS:

Unit is shipped from factory to be hardwired on site. 208 or 240 volt is standard. Please specify at time of order.

A 1/4" waterline is required for proofer. Minimum water pressure specifications for the 1/4" water connection is 30 psi.

LISTINGS:

The SUB-123P has ETL CUS & NSF listings.



DIMENSIONS:

	Height	Width	Depth
Exterior	77-3/4"	36-1/8"	28-5/8"
Interior			
Oven	15"	26-1/4"	20-1/4"
Proofer	33-1/2"	26-1/4"	20-1/4"

CAPACITY:

Sheet Pans	13"x18"	18"x26"	Spacing
Oven	6"	3	4-1/2"
Proofer	18"	9	3-1/2"

INSTALLATION:

Allow four inches on each side and back of unit. Allow five inches on back of unit with water filter.

DOOR SWING: Oven - 34-3/8" • Proofer - 29-1/2"

SHIPPING WEIGHT:

570 Pounds, FOB Menominee, MI 49858



NU-VU® Food Service Systems

www.nu-vu.com
5600 13th Street
Menominee, MI 49858

1-800-338-9886 Toll Free
1-906-863-4401 Phone
1-906-863-5889 Fax