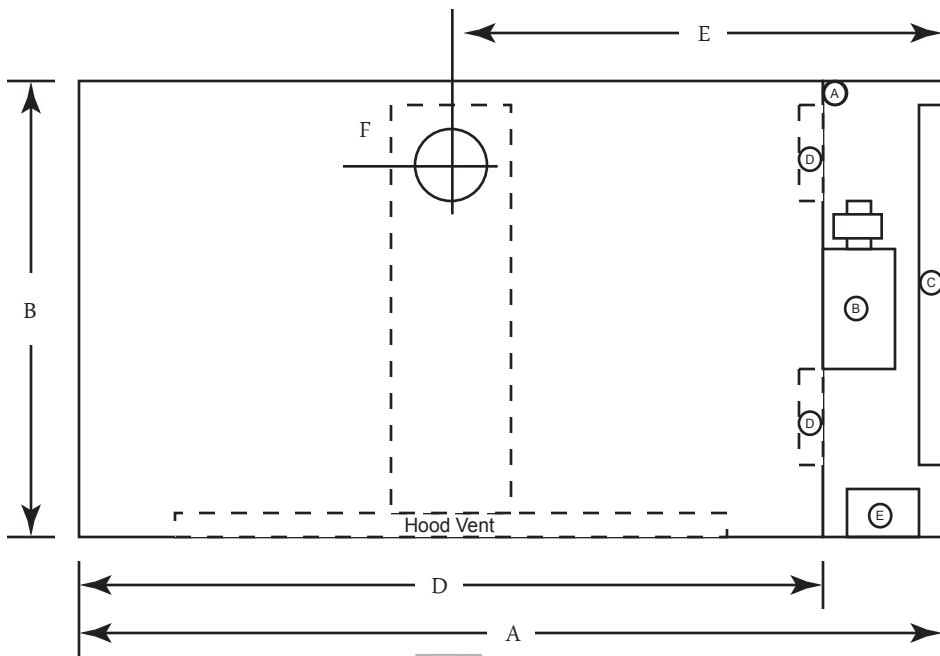
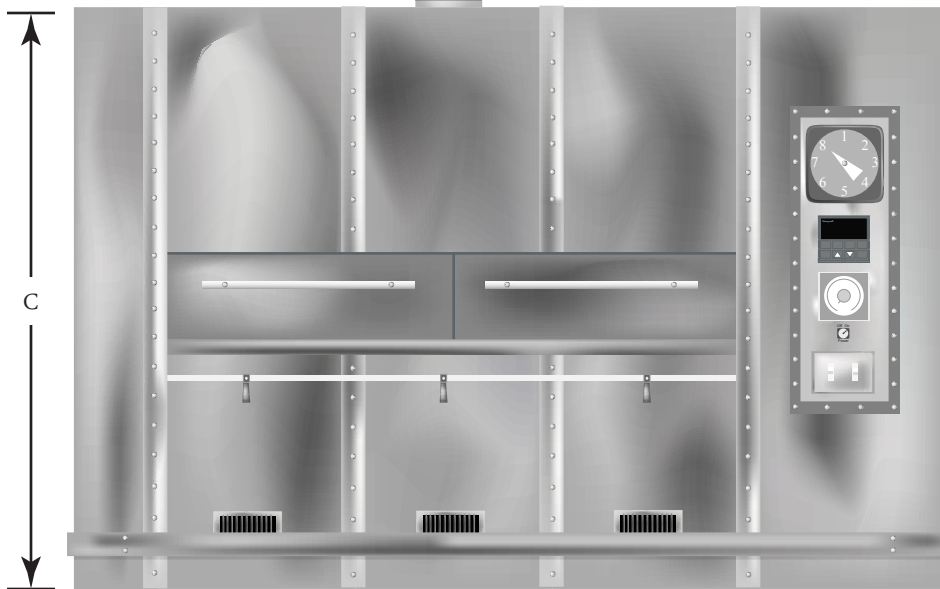


# Wholesaler Oven



- (A) Gas connection - Approx. 30" above floor (6.0" IWC - Nat.) (10.0 IWC - LP)
  - (B) 1/3 HP 115V. 1 PH. Motor
  - (C) Sliding doors for access to mechanism
  - (D) Cleanout door - Approx 7" above floor
  - (E) 110 V. 1 PH. Approx 10 Amps. Connection (30" above floor)
- Connections from ceiling should be stubbed in above oven height

Consult Factory for dimensions of Indirect Fired Ovens



## Shipping Weight

30BP	11,000 lbs.
40BP	12,500 lbs.
48BP	14,700 lbs.
56BP	17,500 lbs.
60BP	18,500 lbs.
70BP	20,000 lbs.

## Model Indicates

# of Shelves in Oven  
Depth of Shelf  
Width of Shelf

Model	Bun Pan	A	B	C	D	E	F	Full Size	Gas Supply	BTU Input
6-26 x 92	30	11'-1"	8'-4"	8'-0"	9'-7"	5'-6"	1'-1"	10"	1' 1/4"	540,000
8-26 x 92	40	11'-1"	9'-8"	9'-2"	9'-7"	5'-6"	1'-1"	10"	1' 1/4"	540,000
8-26 x 110	48	12'-8"	9'-8"	9'-2"	11'-2"	6'-4"	1'-2"	12"	1' 1/4"	640,000
8-26 x 128	56	14'-2"	9'-8"	9'-2"	12'-8"	6'-4"	1'-2"	12"	1' 1/4"	640,000
10-26 x 110	60	12'-8"	11'-2"	10'-4"	11'-2"	6'-4"	1'-3"	12"	1' 1/4"	640,000
10-26 x 128	70	14'-2"	11'-2"	10'-4"	12'-8"	6'-4"	1'-3"	12"	1' 1/4"	640,000

