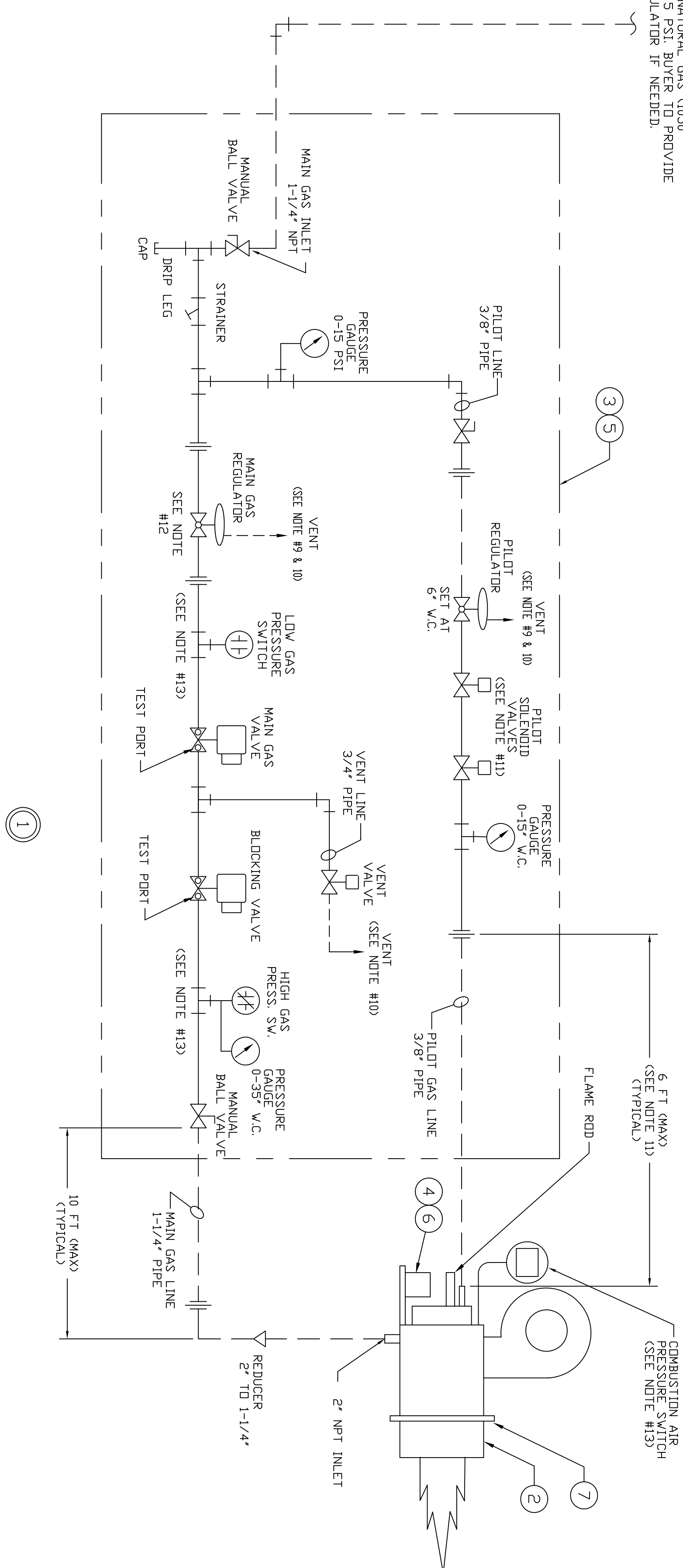


ASSEMBLY NUMBER AND QUANTITY FOR ONE UNIT	ITEM NO.	MAT'L SPEC OR PART NO.	DESCRIPTION	W	L	NLR	DWG. ASS'Y OR ITEM NO.
04 03 02 01			PARENT ASSEMBLY				DSK10094-10
	X		GAS PIPING SCHEMATIC				DSK10094-10-01
	1	L	DISCHARGE SLEEVE - FOR 435 OP2				DSK10094-10/2
	1	L	GAS TRAIN-PREPIPED 1-1/4" DUAL BLOC				DSK10094-10/3
	1	L	MOD MOTOR M7284C1000				DSK10094-10/4
	1	5	GAS TRAIN ASSEMBLY				MAXON-D-1099522
	1	6	BURNER CONTROL MOTOR DETAIL				B049-49-0011-003
	1	L	GASKET-WALL 435 OP II				DSK10094-10/7

BUYER TO PROVIDE MAIN GAS PIPE LINE OF SUFFICIENT SIZE TO SUPPLY 3.8 MILLION BTUH NATURAL GAS (1050 BTU/SCF) AT 5 PSI. BUYER TO PROVIDE PRESSURE REGULATOR IF NEEDED.



NOTE: 435DP2 BURNER BY BUYER

TYPICAL BURNER DATA
 MAXON 435 OVENPAK II
 0.75 HP MOTOR
 3,500,000 BTUH (MAX) AT SEA LEVEL
 @ 0.7\"/>

PIPING NOTES

1. PLANS OF THE TOTAL SYSTEM, INCLUDING PIPING AND ELECTRICAL SCHEMATICS, MUST BE SUBMITTED BY THE BUYER TO THE JURISDICTIONAL AUTHORITIES FOR OBTAINING ANY AND ALL PERMITS AND OR APPROVALS PRIOR TO INSTALLATION. IT IS THE RESPONSIBILITY OF THE BUYER TO ASCERTAIN THAT ALL PIPING IS DONE IN COMPLIANCE WITH ANY AND ALL LOCAL, STATE AND NATIONAL CODES.
2. --- FIELD PIPING BY BUYER.
3. --- PIPING BY AEROGILDE.
4. CHECK FOR DIRECTIONAL FLOW ARROWS ON ALL COMPONENTS BEFORE INSTALLING THEM.
5. USE BLACK IRON PIPE ON MAIN FUEL LINE.
6. USE NO CLOSE NIPPLES OR REDUCING BUSHINGS.
7. FOLLOW BURNER MANUFACTURER'S INSTRUCTIONS FOR INSTALLATION AND START-UP OF BURNER SYSTEM.
8. REGULATORS AND PRESSURE SWITCHES TO BE VENTED TO ATMOSPHERE IN ACCORDANCE WITH JURISDICTIONAL AUTHORITY REGULATIONS.
9. RUN VENT LINE AS DIRECT AS POSSIBLE AND VENT TO OUTDOORS THRU ROOF OR SIDEWALL. PROVIDE WEATHER SHIELD AND BUG SCREEN AT TERMINATION POINT.
10. BUYER TO INSTALL PIPE TRAIN AS CLOSE TO BURNER AS POSSIBLE. THE PILOT SOLENOID SHOULD BE INSTALLED NOT MORE THAN 6 FT FROM THE PILOT INLET CONNECTION ON THE BURNER. RELOCATE THE PILOT SOLENOID IN THE PILOT LINE IF NECESSARY.
11. ADJUST GAS TRAIN MAIN PRESSURE REGULATOR TO SUPPLY NATURAL GAS AT 2.7\"/>

SHOP NOTES:

TOLERANCES UNLESS NOTED
 FRACTION #1/16 DECIMAL #1.015
 SURFACE FINISH NOTE
 UNLESS OTHERWISE SPECIFIED, ROUGHNESS HEIGHT ON ALL MACHINED SURFACES SHALL NOT EXCEED 125 MICRO-INCHES

COPYRIGHT © ALL RIGHTS RESERVED. CONTENTS OF THIS DRAWING ARE THE PROPERTY OF AEROGILDE CORP AND MAY NOT BE USED FOR ANY PURPOSE OTHER THAN THAT FOR WHICH IT WAS PROVIDED TO ANY THIRD PARTY WITHOUT THE EXPRESS WRITTEN PERMISSION.

REV	DESCRIPTION	DATE	BY

DSK10094-10

Aerogilde Corporation
 P.O. BOX 29505
 TELEPHONE (919) 851-2000 RALEIGH, NORTH CAROLINA 27626
 FAX (919) 851-6029

GAS PIPING SCHEMATIC
 MAXON OVENPAK II 435 BURNER
 W/ PRE-PIPED GAS TRAIN

REF NO. DSK07062-13
 DRAWING NUMBER DSK10094-10

JOB NO. 10094