

# **RONDO DOGE®**

## **DATA SHEET**

### **RONDO COMPUTERIZED SHEETER MODEL COMPAS 3000 SFA 6127SH**



### **Compas 3000**

- has a memory for 50 programs. They include:
- Program type:
    - Single program
    - Multi-program: linking up to three single programs
  - Initial roller gap
  - Final roller gap
  - 9 Roller reduction programs
  - Width control
  - 3 program endings:
    - Stop for folding
    - Stop for reeling
    - Automatic reeling
  - Flour dusting program

### **Features**

- Ideal sheeter to feed make up line
- Designed for long, continuous runs
- Process dough blocks up to 44 lbs.
- Speed is programmable for each type of dough
- Electronic sheeter controlled by photocells
- Automatic eye cleaning mechanism
- Flour dusted evenly over dough band under program control
- Width of dusting flour synchronized with the width of the dough band
- Control width and final sheeting thickness for uniform products
- Scraper system easy to clean and remove
- Option: automatic dough reeler

### **Technical Data**

Substructure A-frame in stainless steel	stainless steel mobile, rigid substructure with table supports
Automatic dough reeler	included
Automatic flour duster	included
Inlet rollers at safety guards and gas springs	optional
Width of conveyor belts	25 1/4"
Table length overall	143"
Roller length	26"
Safety guard opening	3 1/2"
Roller gap	1/32" - 3/4"
Roller gap reduction	Motorized: 50 automatic programs 20 Man/Auto Programs
Speed of discharge conveyor	2" - 4"/sec
Required floor-space in: working position,	
catch pans extended resting	44" x 150 3/8"
position (tables folded up)	44" x 143"

Subject to technical changes without notice. The type specific and the safety instructions of the operating manuals as well as the prohibition, mandatory action and warning signs are to be observed.



51 Joseph Street, Moonachie, NJ 07074 USA (201) 229-9700 FAX: (201) 229-0018  
In Canada: Bakery Equipment, Inc., 267 Canarctic Drive, Downsview, Ont., Canada M3J 2N7 (416) 650-0220 FAX: (416) 650-9540

### **Dimensions:**

Net Weight: 786 lbs.  
Shipping Weight: 1069 lbs.  
Crate Dimensions: 53" x 38" x 75"  
73" x 38" x 17"

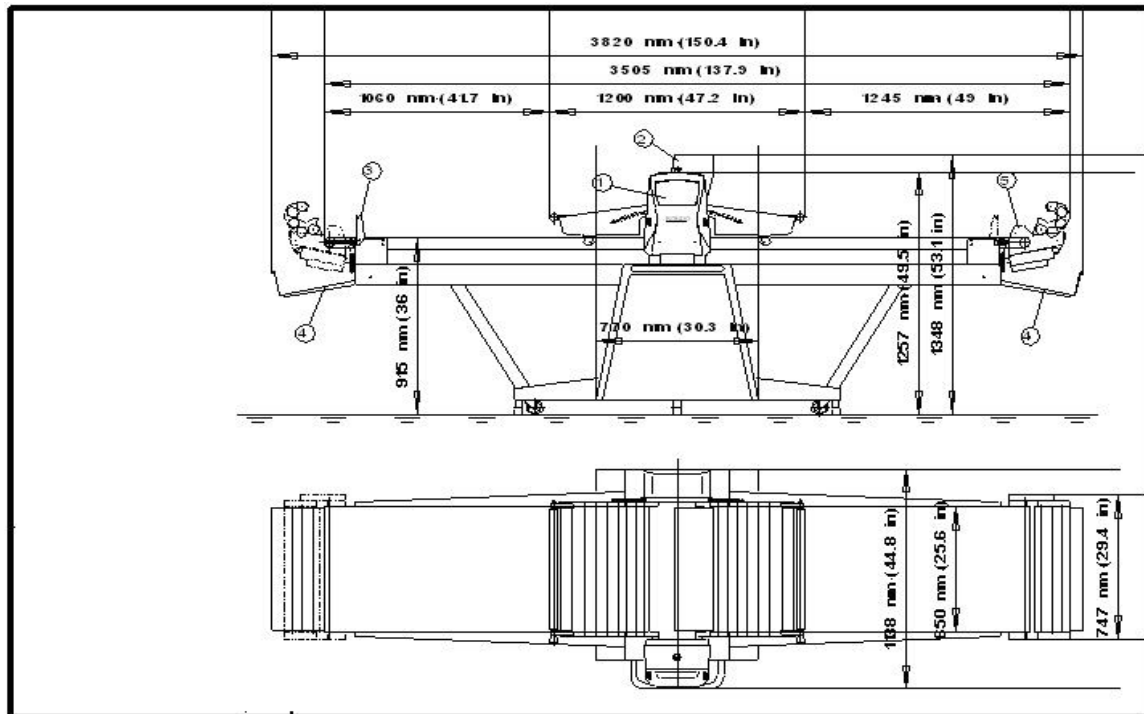
### **Electrical:**

220 VAC, 3-phase, 60 Hz, 1.5 HP, 4.5 AMPS  
Supplied with 8ft. cord and NEMA plug #L1520P  
Special electrics also available.

### **Approvals:**



**RONDO INC.**



- 1. Central control unit
- 2. Flour depositor

- 3. Dough reeler brackets
- 4. Dough catch pan

- 5. Automatic dough reeler

Design and dimensions subject to change without notice