

Peerless® SPIRAL FLOW DOUGH FEEDER

APPLICATION

The Peerless® Spiral Flow Dough Feeder is designed to feed a continuous supply of dough to the hopper of a dough divider or forming equipment without changing the dough condition or increasing its temperature.

FEATURES

- Handles a wide variety of doughs including bread, roll, frozen dough, as well as biscuit, cracker and snack doughs.
- Unique spiral auger gently moves dough without changing the dough characteristics.
- Hopper capacities from 500 pounds to 3000 pounds of dough with output rates of 500 to 20,000 pounds per hour.
- Little or no increase in dough temperature.
- Power requirement of 3/4 HP motor is substantially less than conventional dough feeding systems.
- Operator friendly / minimal training requirements.
- Open design for ease of sanitation and routine maintenance.



Peerless® SPIRAL FLOW DOUGH FEEDER

OPTIONS

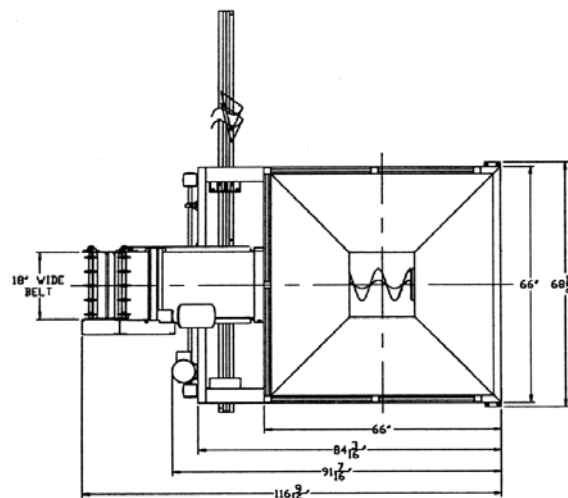
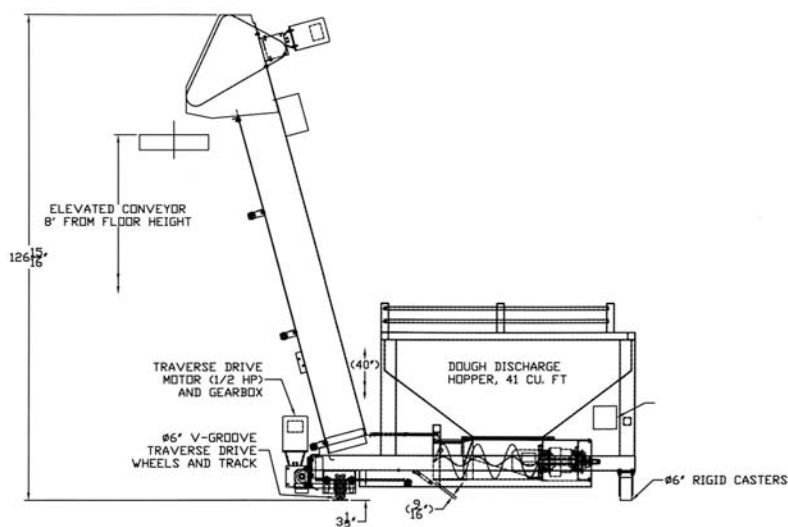
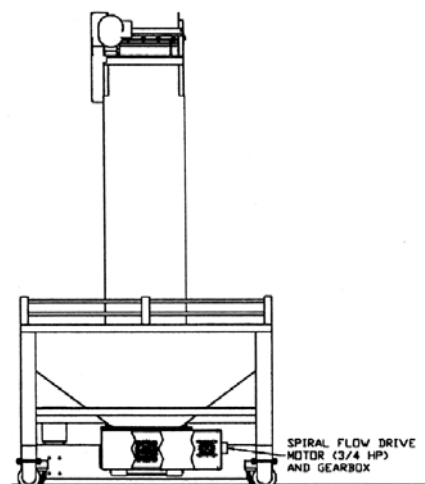
- Power traverse for use with multiple mixers.
- Vertical discharge conveyors and dough feed conveyors to automatically feed one or more processing lines.
- Integrated with mixer control system.
- Special hopper configurations.

SPECIFICATIONS

- Hopper Capacities 600 lbs (272 kg) to 3000 lbs (1360 kg)
- Throughput Rates 500 lbs to 20,000 lbs per hour.
- Electrical 460 V, 3 phase, 60 Hz
Other per customer request
- Drive Motor 3/4 HP Standard

AVAILABLE MODELS

- SF6 600 lbs hopper capacity.
- SF10 1,000 lbs hopper capacity.
- SF16 1,600 lbs hopper capacity.
- SF20 2,000 lbs hopper capacity.
- SF24 2,400 lbs hopper capacity.
- SF28 2,800 lbs hopper capacity.
- SF32 3,200 lbs hopper capacity.



Model SF20 with vertical conveyor and power traverse