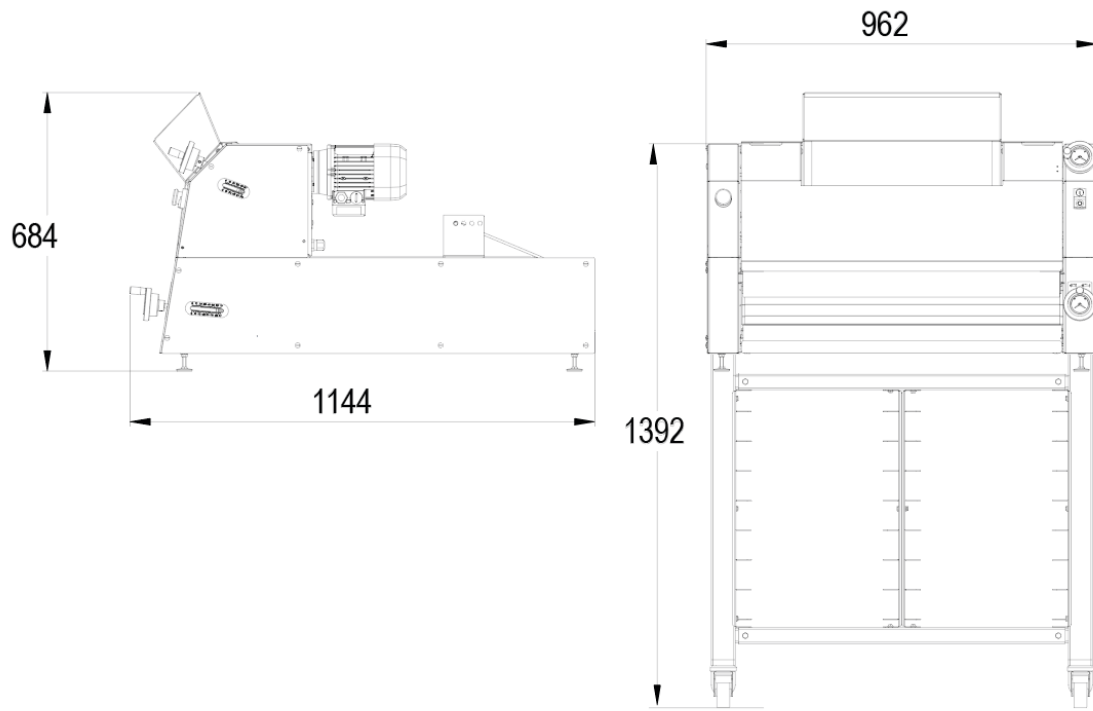


# HF

- ✓ Horizontal moulding to take maximum care of the dough
- ✓ Strong pace
- ✓ Silent (-65dB)
- ✓ Stainless steel exterior

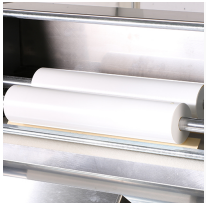




## SPECIFICATIONS

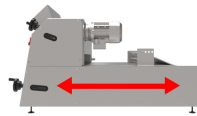
MIN/MAX WEIGHT OF DOUGH PIECES IN OUNCES	1.76 / 42.3 OZ
THREE FOOD-GRADE PETP ROLLERS	•
MAXIMUM SPEED IN PIECES PER HOUR	1800
MOTOR POWER IN KW	1.1
TYPE OF MOTOR	3PH/208V/60HZ/4.8A
BELT TYPE	SYNTHETIC
NET WEIGHT IN LBS	440

## MAIN STRENGTHS



### Rollers

Two food-grade polyethylene rollers



### Horizontal moulding

Horizontal moulding to take maximum care of the dough



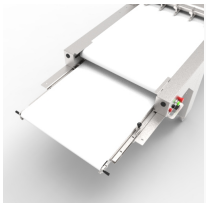
### Progressive elongation

Thanks to the chain mail



### Ergonomy

Ergonomic, accurate indicators



### Tapis évacuation extractible (option)

Facilite le déchargement



### Plug Configuration

NEMA L15-20P



### Partners

JAC is a member of these different associations