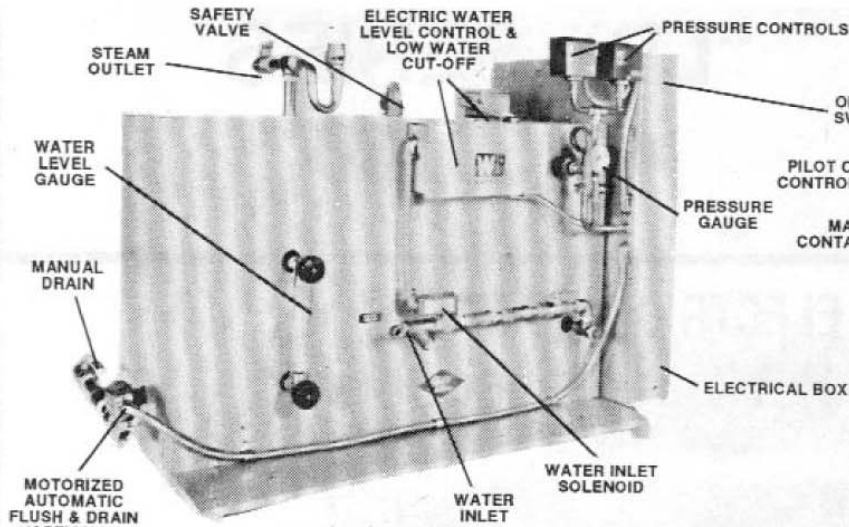
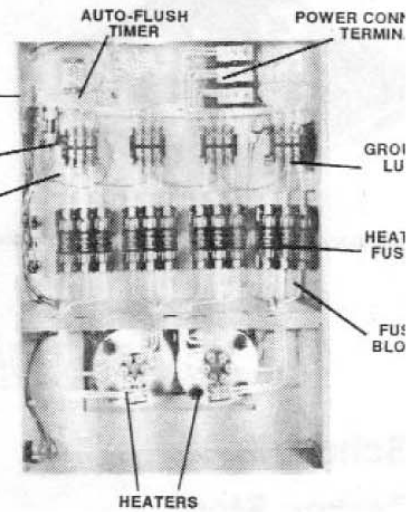


# TECHNICAL DATA & SPECIFICATIONS (LB SERIES) ELECTRIC STEAM GENERATOR



SIDE VIEW SHOWING BASIC CONTROLS LB 40-60 SERIES



BASIC ELECTRIC PANEL MODEL LB 40-60 SERIES

MODEL NUMBER		LB-40	LB-50	LB-60
Electric Rating	KW	40	50	60
Developed Boiler Horsepower	BHP	4.0	5.0	6.0
*Steam Capacity (from & at 212°F)	LB/HR	138	173	207
Gross BTU Output (100% Rating)	BTU/HR	133,900	167,500	201,000
Number of Sections	Units	2	2	2
Diam. Steam Header (Per Section)	Inches	5	5	5
Diam. Water Header (Per Section)	Inches	10	10	10
<b>DIMENSIONS**</b>				
Height, Overhaul (Including Fittings)	Inches	33	33	33
Length, Overhaul (Including Fittings)	Inches	50	50	50
Width, Overhaul (Including Fittings)	Inches	26	26	26
Amperpage 30/220V	AMPS	105	132	157
Water Inlet	Inches	3/8	3/8	3/8
Steam Outlet High	Inches	3/4	3/4	3/4
Shipping Weight H.P. Model	LB	500	500	500
Shipping Weight L.P. Model	LB	425	425	425

## SUGGESTED SPECIFICATIONS

The Fully Automatic All Electric Steam Generator as called for under requirements of this specification shall be as manufactured by The Electro-Steam Generator Corporation or equal and shall meet all of the following requirements:

- Generator shall be constructed under the A.S.M.E. Power Code - Section 1 Part PMB (Miniature - 100 lbs. P.S.I.)
- Each generator shall be shop inspected and stamped by a National Board of Boiler and Pressure Vessels authorized inspector.
- HEATING ELEMENT CONSTRUCTION- Nicrome 80-20% wire rod with with compacted Magnesium Oxide, Sheathed in an Incoloy (stainless) tube. Entire element is silver-brazed into a removable flange fitting.
- U.L. & C.S.A. LISTING - shall cover complete Electric Steam Generator Package with all electric controls mounted on generator - not acceptable with U.L. & C.S.A. on electric controls only.
- Standard boiler trim plus combination water and pump controller- adjustable steam pressure control.
- All equipment and controls shall be mounted and wired as a complete single package requiring only city water connection, drain line and electric line service at point of installation.

## ADVANTAGES OF ELECTRIC STEAM

- INSTANT STEAM - "Push Button" Steam in less than 10 minutes.
- SAFETY FIRST**
  - NO open flame
  - NO fumes
  - NO combustible fuel
  - NO fuel storage
  - NO long hot steam lines
  - Completely automatic
- LOWER INSURANCE RATES
- NO HEAT - Radiates little or no heat, making it ideal for crowded areas, air-conditioned rooms, etc.
- ELIMINATES - Normal boiler installations - no chimney - no long steam lines - no enclosures just connect to electric service, drain line and city water line.
- 96% EFFICIENCY.
- HIGH QUALITY - Steam at all times; ideal for use, where heavily saturated - "wet" steam has caused difficulties.
- INSTALLS WHERE YOU WANT STEAM - Locat generator next to point of use.

## ELECTRICAL SPECIFICATION - ALL MODEL

1. **STANDARD UNITS** - AC - 208-240/120 volts, 60 cycle, 3 phase or 440-480/120 volts.

2. **SPECIAL ELECTRICAL REQUIREMENTS** - 380 or 550 volts-50 cycle - etc. special order upon request. SPECIFY CURRENT CHARACTERISTICS (voltage cycle-phase).

### \*\*Note No. 1

All units require an additional 18" of floor space (length) for ideal plumbing connections and service

### \*\*Note No. 2

All units require an additional 36" clearance at at front for opening of electric panel boxes and servicing of electric heaters.

