

Clean Me Up, Scotty



**For outstanding, powerful and
economical pan washing**

Model CL10



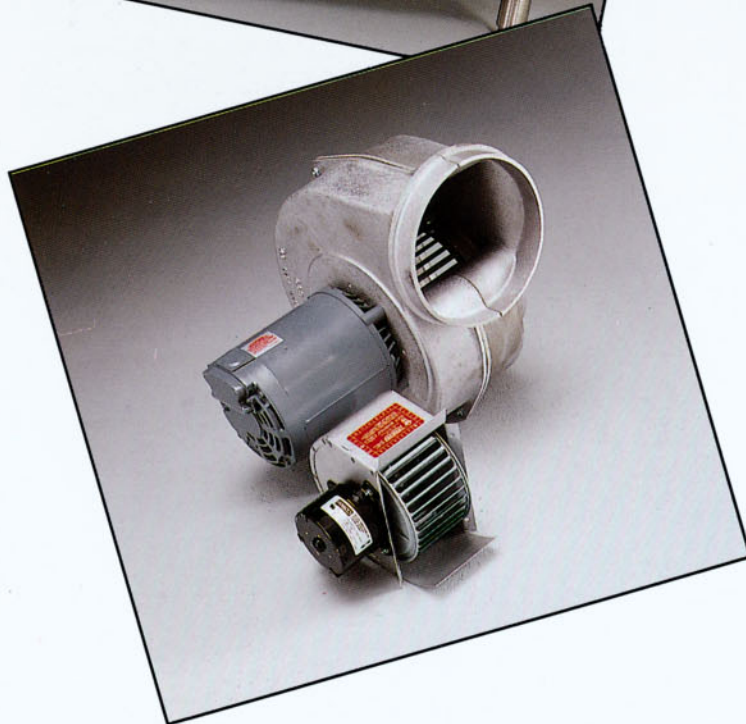
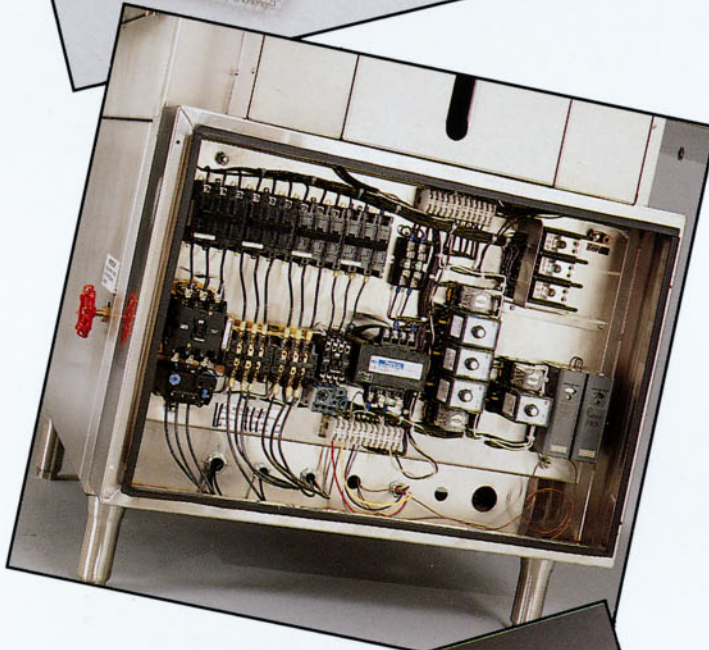
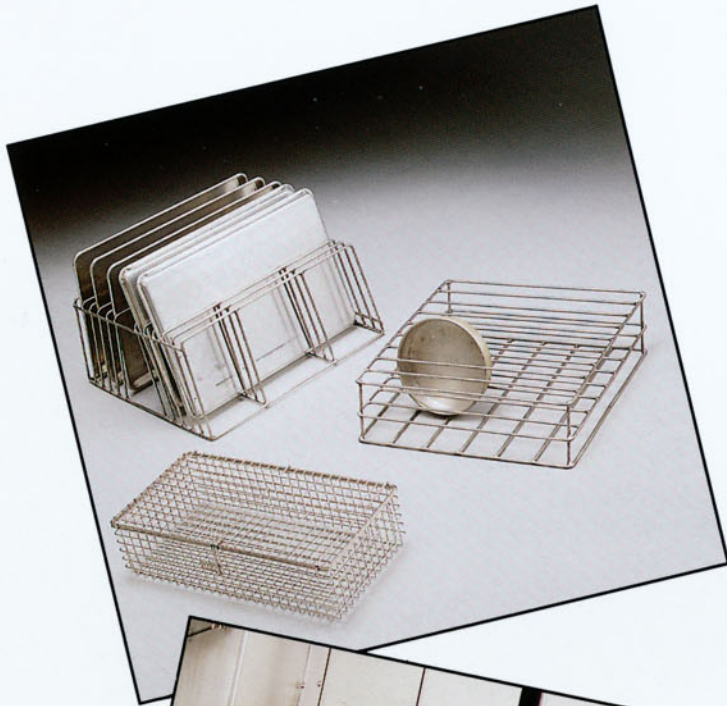
**ACCESSORIES
MODEL: CL10**

- * Power venting – 100 CFM Tjernlund fan or 700 CFM American Fan
- * Racks – Bun pan, cake pan, or utensil basket
- * Automatic Fill



LVO MANUFACTURING INC.

P.O. Box 188, 808 N 2nd Avenue E, Rock Rapids Iowa 51246
Phone: 712/472-3734 or 712/472-3735, Toll Free 1-800-346-5749, Fax 712-472-2203



UTILITY RACKS

These stainless steel utility racks are sturdy and reliable, and are built to withstand the day to day operations.

Available racks:

Bun/Sheet Pan Rack

Cake Pan Rack

Utensil Basket w/holddown lid

Special racks can be built upon customer request.

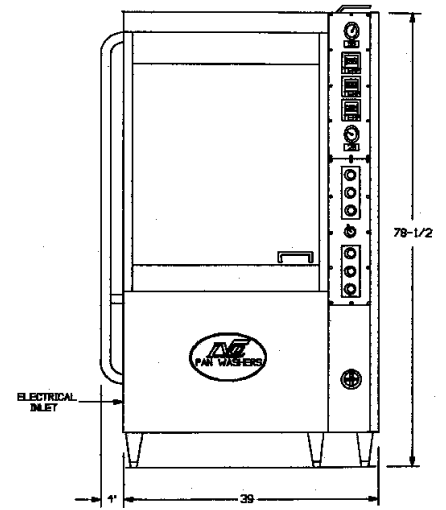
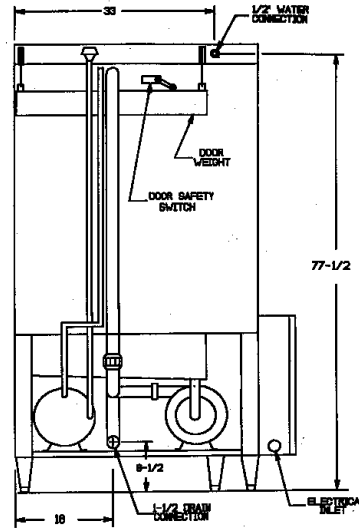
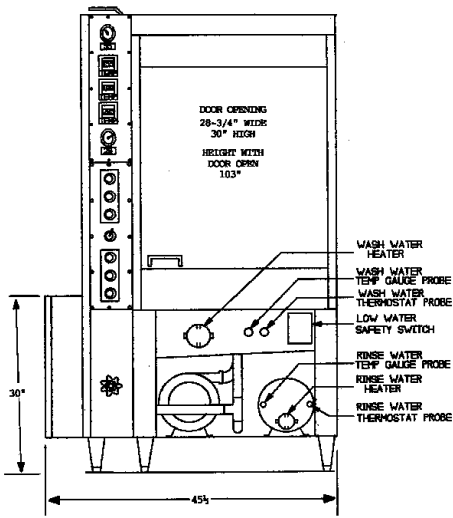
ELECTRICAL CONTROL PANEL

Our stainless steel, UL approved control panel is dependable and accessible. Using breakers and a limited number of fuses allows nearly trouble-free operation. Available with 208, 220, 480V-3 phase or single phase.

POWER VENTING

Remove steam from your washer quickly and efficiently before it enters your work area. With the 100 CFM Tjernlund Fan or the 700 CFM American Fan, it is sure to work for you.

**We Service
What We Sell!**



Model CL10

Specifications

Wash Cap: 10 pans, utensils or 140 quart bowl

Pump: 7.5 H.P. - 208, 240, 480V, 60 cycle, 1 phase or 3 phase - recirculates app. 140 G.M.P. - 50 - 60 PSI at the nozzles

Timers: Wash, delay, rinse - all adjustable

Electrical Components: U.L. approved

Wash Tank: 25 gal. cap. - electric, steam or gas

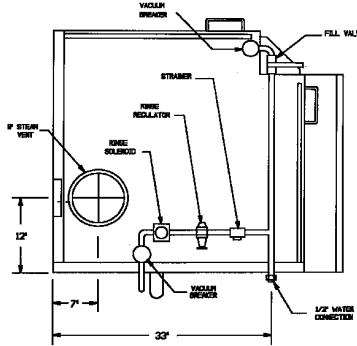
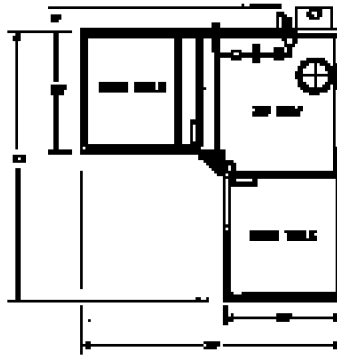
Construction: 12 and 14 GA stainless steel

Rinse Tank: NSF approved: Stainless steel with 9 KW

electric booster heater to boost 120° water to 180°-195°

sanitizing rinse water.

Model CL10 Electric



Total Amperage

	208V	240V	480V
Electric	77.6	68.4	35.0
Gas or Steam	49.8	44.2	23.0

Gas Rating 36,000 BTU

Rinse Tank Cap. - 7 gal.

35 sec. rinse @ 20 psi

4.5 gal/cycle

Model CL10 Gas

