

Visit us on the web at www.lvomfg.com.

LVO Pan Washers In A Class Of Their Own



High-Pressure For The Cleanest Wash Possible



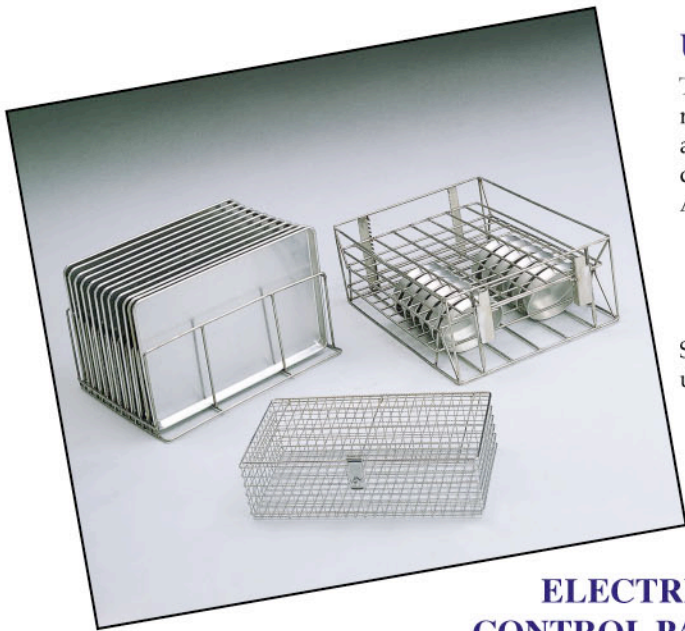
- Washes a variety of items in one cycle
- Front loading, for easy loading and unloading
- Heavy duty stainless steel construction
- Recirculating wash water
- Easy to remove, double filtration system
- Two rotating wash arms with high velocity spray nozzles
- Separate wash and rinse tanks with adjustable cycle timers

Model FL 25

- Self contained water heated by electric, gas or steam
- External wash-down hose
- Maintenance free hub system
- Waterproof LED Digital Gauges
- One year parts and labor warranty



Visit us on the web at
www.lvomfg.com.



UTILITY RACKS

These stainless steel utility racks are sturdy and reliable, and are built to withstand the day to day operations.

Available Racks:

- Bun/Sheet Pan Rack
- Cake Pan Rack
- Utensil Basket w/hold down lid

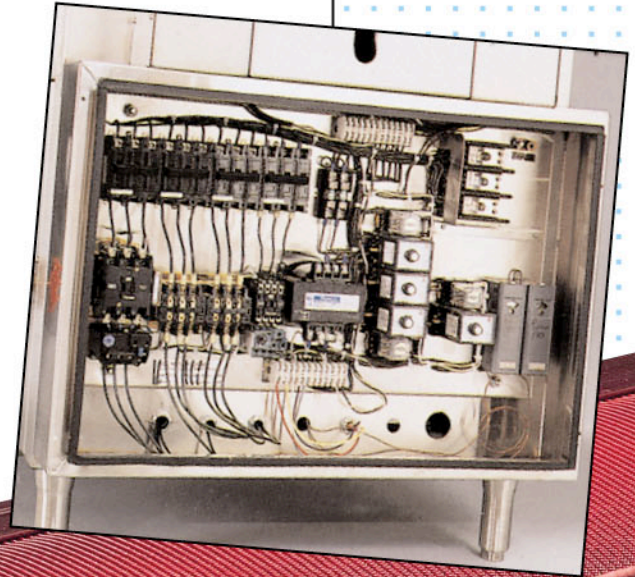
Special racks can be built upon customer request.

Visit us on the web at
www.lvomfg.com.

ELECTRICAL CONTROL PANEL

Our stainless steel, UL approved control panel is dependable and accessible. Using breakers and a limited number of fuses allows nearly trouble free operation.

Available with 208, 230, 460V-3 phase or single phase.



INFRARED BURNERS

- Quieter
- Better than 80% efficient
- Cleaner burning
- No burner tubing to clean or maintain in the wash tank
- Repairs & maintenance of burners easier and more economical

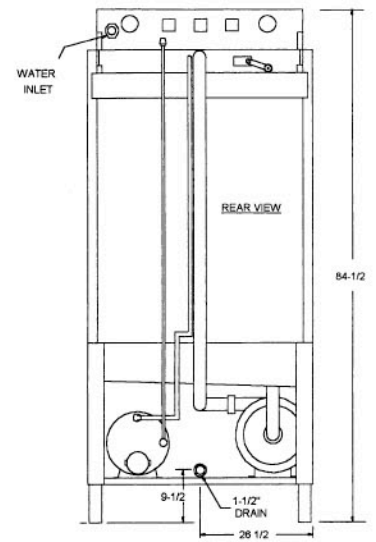
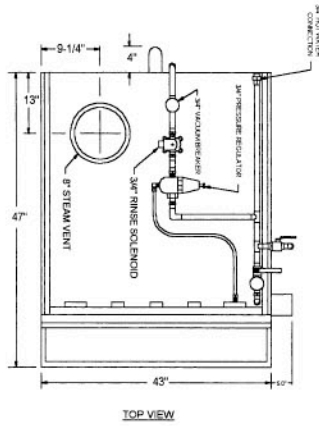
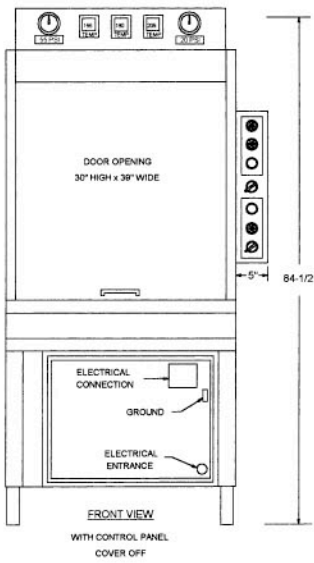


POWER VENTING

Remove steam from your washer quickly and efficiently before it enters your work area. With the 100 CFM Tjernlund Fan or the 700 CFM American Fan, it is sure to work for you.

**We Service
What We Sell !**

Electric



Electric

Gas

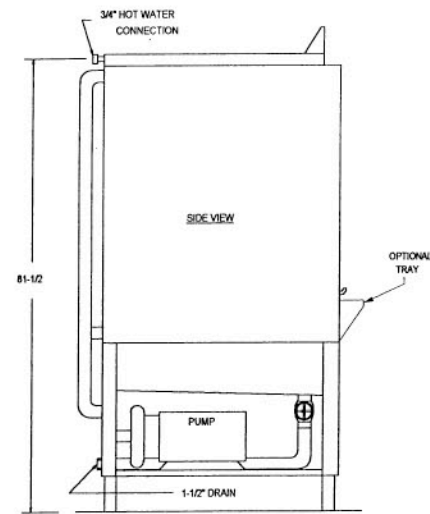
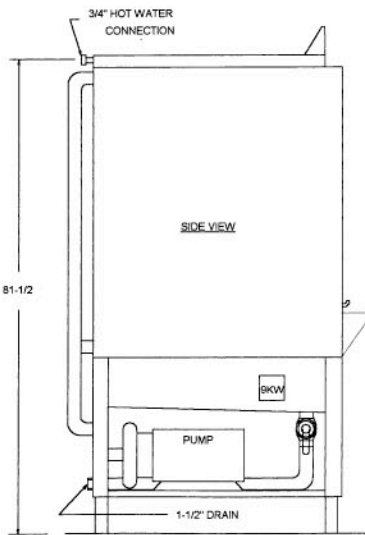
Width	48"	Width	48"
Depth	51"	Depth	53"
Height	84-1/2"	Height	84-1/2"

Height with open door	106"	Height with open door	106"
-----------------------	------	-----------------------	------

Total Amperage

	208V	230V	460V
Electric	79.0	72.2	37.1
Gas	54.0	49.6	25.8

Gas Rating 48,000 BTU/HR
7" W.C. Inlet Nat.
11" W.C. Inlet L.P.

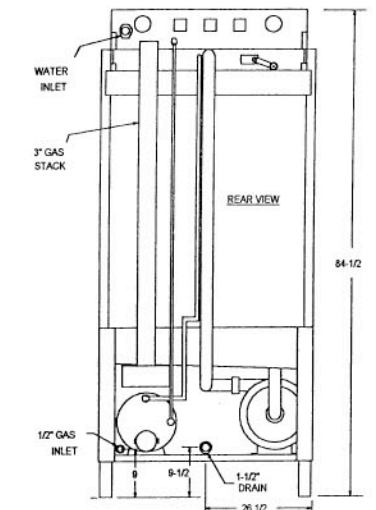
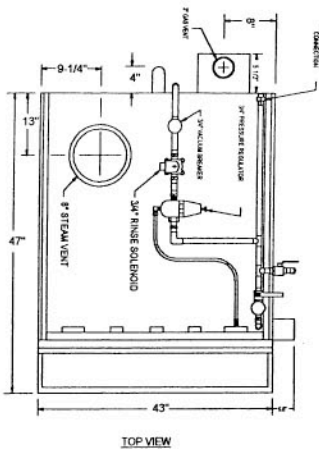
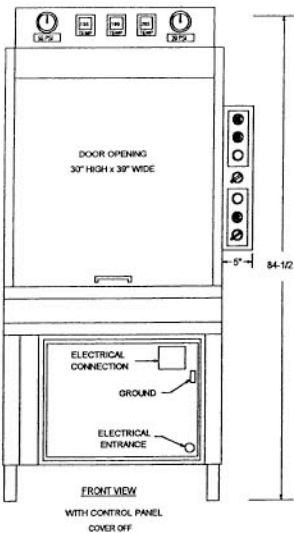


Electric

Gas

Water Requirements All Machines:
140 Degree Water - 84 GPH. at 20 PSI. MIN.

Gas



* Manufacturer reserves the right to change specs with out notice.

Visit us on the web at
www.lvomfg.com.



LVO MANUFACTURING INC.

P.O. Box 188, 808 N 2nd Avenue E
Rock Rapids Iowa 51246
Phone: 712/472-3734 or 712/472-3735
Toll Free 1-800-346-5749
Fax 712-472-2203