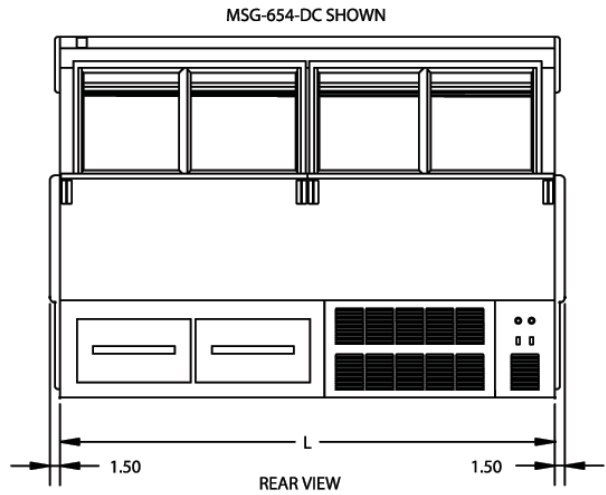
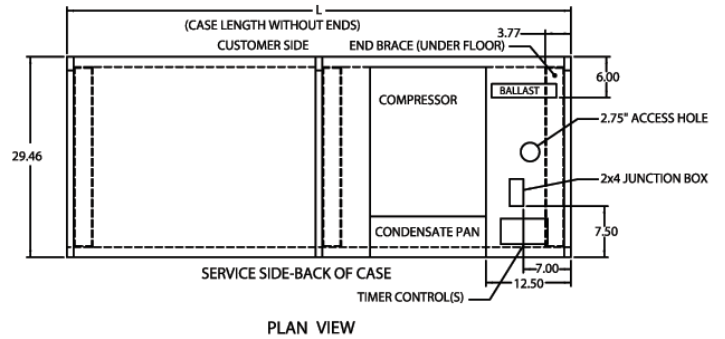
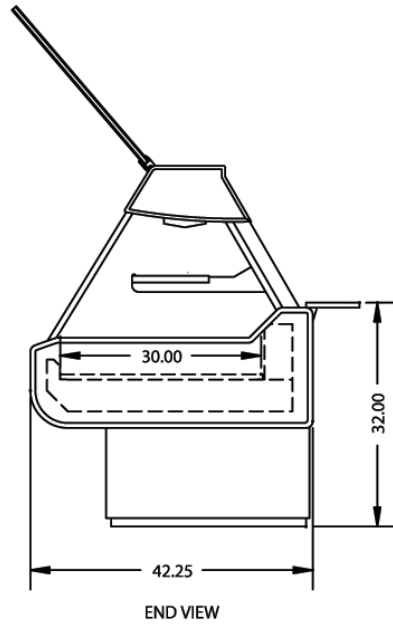


HIGH VOLUME REFRIGERATED MAXI DELI CASE

OPTIONAL ACCESSORIES:

- * Special Color Laminated Base
- * Additional Lighted Mezzanine Shelf
- * Paper Roll Cutter/Holder
- * Reflective Ends
- * Reflective Doors
- * Remote Refrigeration
- * Scale Stand
- * Slicer Stand
- * Deli Step Pan Holder or Risers
- * Promolux Lighting



SPECIFICATIONS:

| Model | Dimensions L W H | Shipping Weight (lbs) | Capacity (Step Pans) | *Self-Contained 120/60/1 | *Remote 120/60 |
|-------------|----------------------|--------------------------|-------------------------|-----------------------------|-------------------|
| MSG-454-DC | 50" x 42 1/4" x 54" | 730 | 4 | 3/4 HP - 15.4 AMPS | 10.4 AMPS |
| MSG-654-DC | 74" x 42 1/4" x 54" | 930 | 6 | 3/4 HP - 15.6 AMPS | 10.6 AMPS |
| MSG-854-DC | 98" x 42 1/4" x 54" | 1,210 | 8 | 3/4 HP - 15.8 AMPS | 10.8 AMPS |
| MSG-1054-DC | 122" x 42 1/4" x 54" | 1,530 | 10 | 3/4 HP - 16.0 AMPS | 11.0 AMPS |

- Includes general purpose receptacle 120V, 3AMP.
- Refrigerated cases are designed to operate in a maximum environment of 75° ambient and 55% relative humidity.
- Due to continuing engineering improvements, specifications are subject to change without notice.

