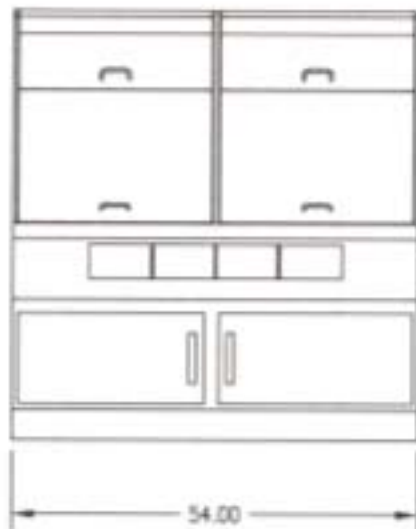


BAKERY CASE

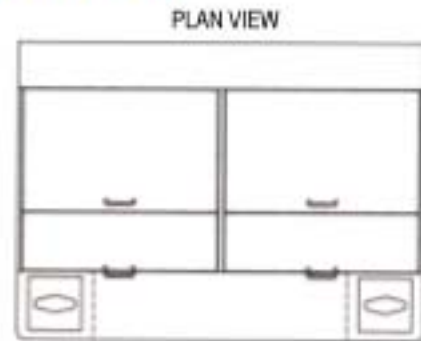
SELF-SERVE NON-REFRIGERATED

OPTIONAL ACCESSORIES:

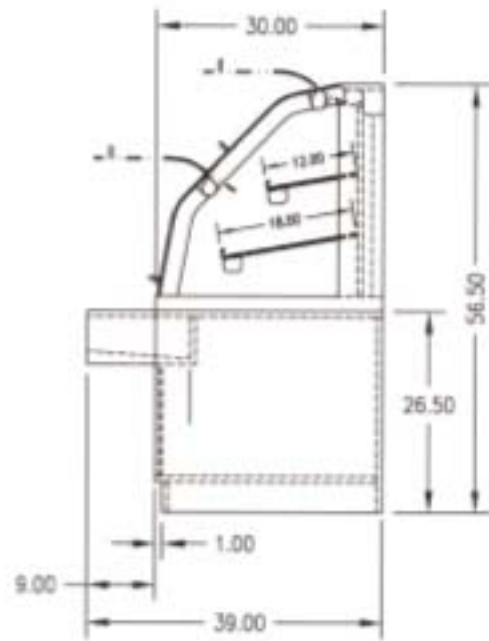
- * Casters or Legs
- * Cord & Plug
- * Special Color Laminated Base
- * Mirrored Ends
- * Rear Sliding Glass Doors
- * Shelf Lights



FRONT VIEW



PLAN VIEW



SIDE VIEW

SPECIFICATIONS:

Model	Dimensions			Shipping Weight (lbs)	Capacity (Bakery Pans)
	L	W	H		
BPFD-54SS	54"	39"	56 1/2"	750	6 (13" x 26")

- Electrical requirements for optional lights 120/60/1 - 2 AMPS.
- Due to continuing engineering improvements, specifications are subject to change without notice.



Standex company