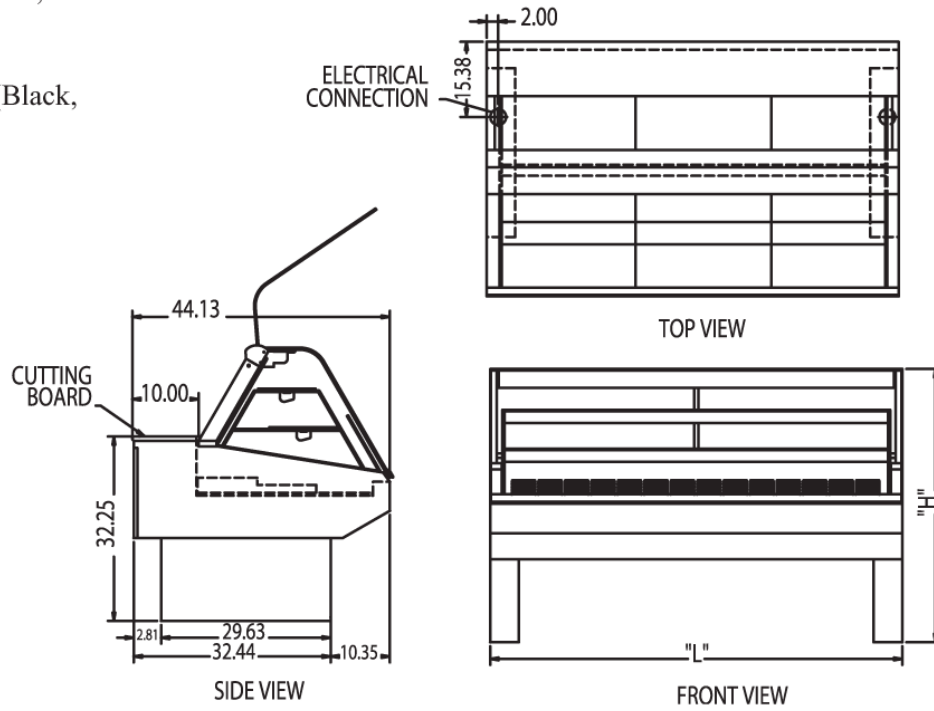


MARKET SERIES REFRIGERATED BAKERY CASE

OPTIONAL ACCESSORIES:

- * Special Case Height (50" or 52")
- * Front Bumper Rail (Black, White, Green, Gray)
- * Reflective End Glass
- * Decorative End Panel (Black, White, Green, Gray)
- * Remote Refrigeration
- * Top Service Shelf
- * Humidity Control
- * Accent Base Light
- * Promolux Lighting



SPECIFICATIONS:

Model	*Dimensions L W H	Approx. Shipping Weight (lbs)	**Self-Contained 120/60/1	**Remote 120/60/1
SQ-3CB	36" x 44 1/8" x 48"	790	1/2 HP - 11.5 AMPS	6 AMPS
SQ-4CB	48" x 44 1/8" x 48"	795	1/2 HP - 13.8 AMPS	7 AMPS
SQ-5CB	60" x 44 1/8" x 48"	845	1/2 HP - 13.8 AMPS	7 AMPS
SQ-6CB	72" x 44 1/8" x 48"	1,135	1/2 HP - 14.8 AMPS	7 AMPS
SQ-8CB	96" x 44 1/8" x 48"	1,235	3/4 HP - 16.0 AMPS	8 AMPS

- *Without decorative end panel.
- **Plus general receptacle 120V, 15 AMP. (2nd circuit required.)
- **When ordering, specify case line-up and pedestal or panel design.**
- Refrigerated cases are designed to operate in an environment of 75° ambient and 55% relative humidity.
- Due to continuing engineering improvements, specifications are subject to change without notice.
- **Refrigerated bottom display deck, non-refrigerated shelves.**



a Standex company