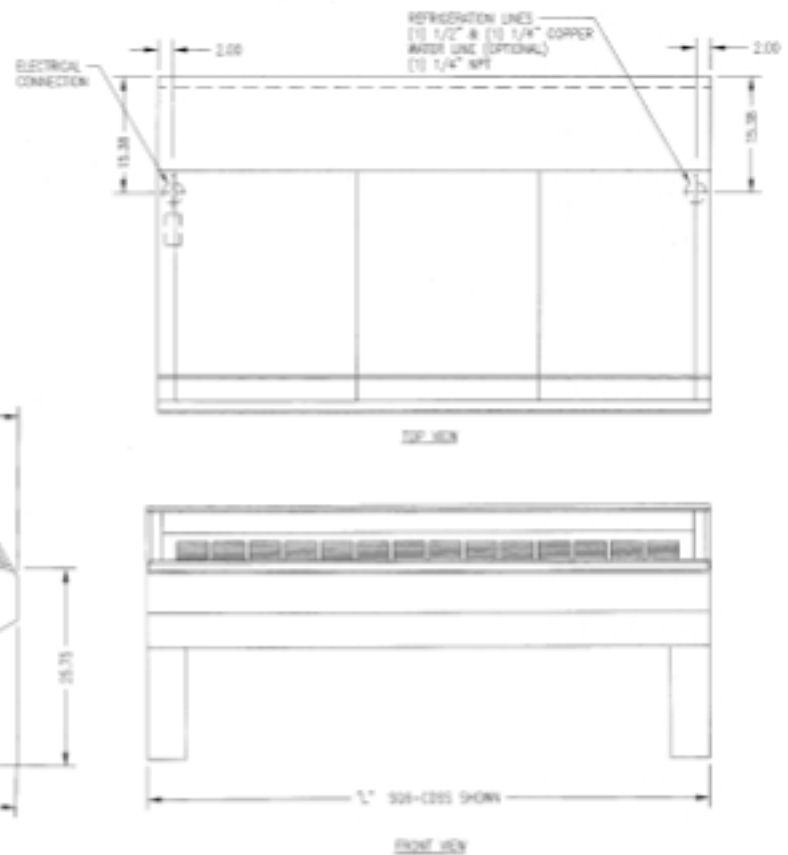
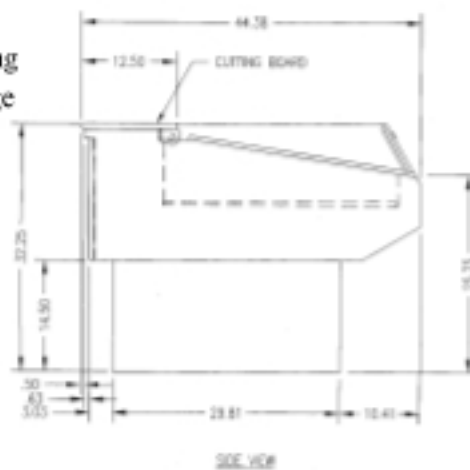


# SQ MARKET DELI™

## SELF-SERVE REFRIGERATED CASE

### OPTIONAL ACCESSORIES:

- \* Special Case Height (50" or 52")
- \* Front Bumper Rail  
(Black, White, Green, Gray)
- \* Display Riser or Step Pan Holder
- \* Remote Refrigeration
- \* Decorative End Panel  
(Black, White, Green, Gray)
- \* Scale Stand
- \* Food Container Holder
- \* Accent Base Light
- \* Slicer Stand
- \* Promolux Lighting
- \* Fish Case Package  
(Includes Ice Pan and Drain)



### SPECIFICATIONS:

Model	*Dimensions L W H	Approx. Shipping Weight (lbs)	Capacity Display Riser	**Self-Contained 120/60/1	**Remote 120/60/1
SQ-3CDSS	36" x 44 1/8" x 32 1/4"	675	3	1/2 HP - 11.5 Amps	6 Amps
SQ-4CDSS	48" x 44 1/8" x 32 1/4"	895	4	1/2 HP - 13.8 Amps	7 Amps
SQ-6CDSS	72" x 44 1/8" x 32 1/4"	1,035	7	1/2 HP - 14.8 Amps	7 Amps
SQ-8CDSS	96" x 44 1/8" x 32 1/4"	1,135	9	3/4 HP - 16.0 Amps	8 Amps

- \* Without decorative end panel.
- \*\* Plus general receptacle 120V, 15 Amp. (2nd circuit required.)
- **When ordering, specify case line-up and pedestal or panel design.**
- Cases are designed to operate in an environment of 75° ambient and 55% relative humidity.
- Due to continuing engineering improvements, specifications are subject to change without notice.

